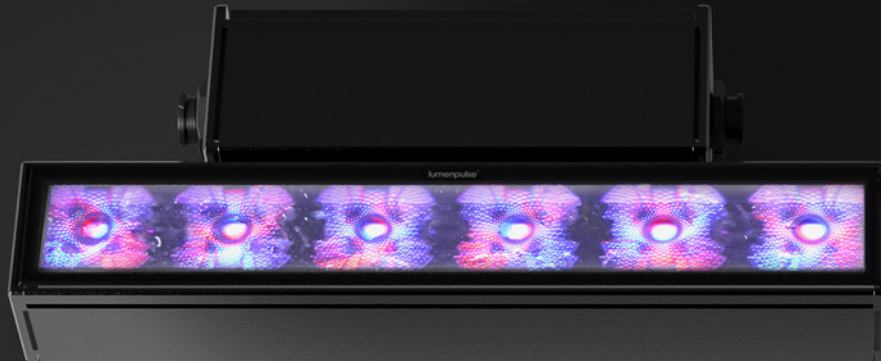




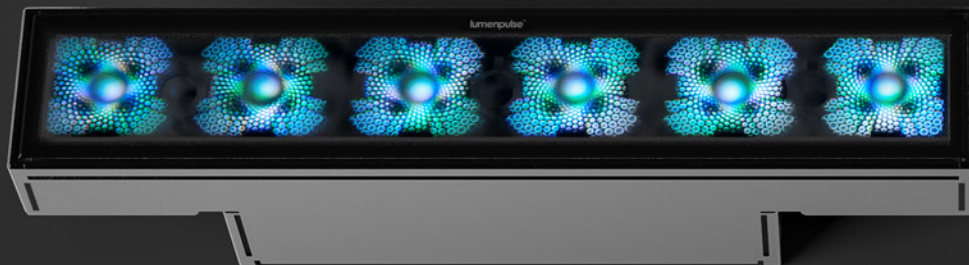
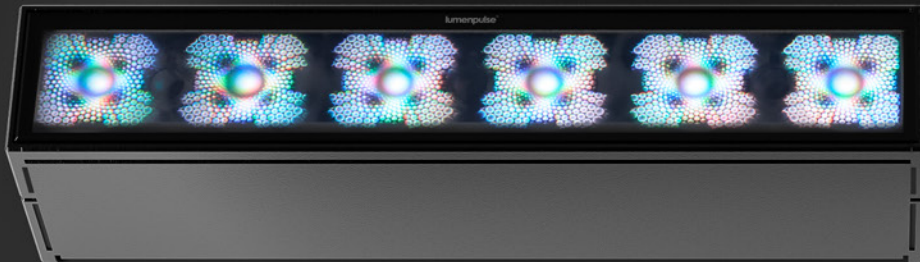
lumenpulse™

lumenfacade™ max

Mountings, Optics, and Applications



True 1'



Form + Function

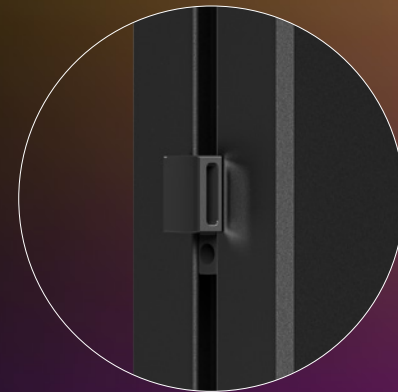
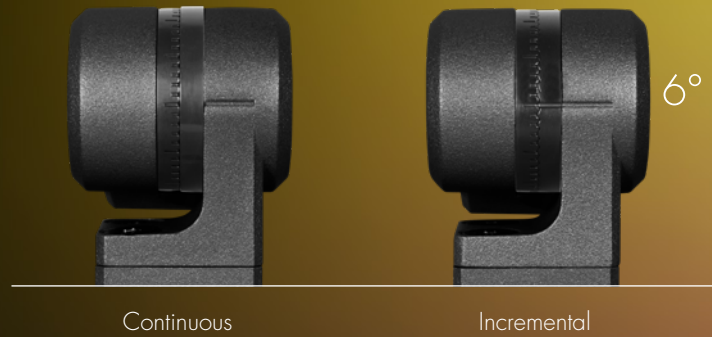
Design that dances the fine line between now and the distant future.

With one foot in the now and one foot in the future, the Lumenfacade Max exacts an unheard-of functionality for such a minimalist form.

Available in Continuous Run, Continuous Horizontal, and Standalone.

Mountings

- Mountings are optimized for beam spreads and do not require sliding the fixture on or off. Instead, click and lock the Max into place.
- Mounting arms act as a concealed cable management system, allowing vertical installations.
- Options include mountings that are continuously adjustable or calibrated in six-degree increments.



Cable Management Slide

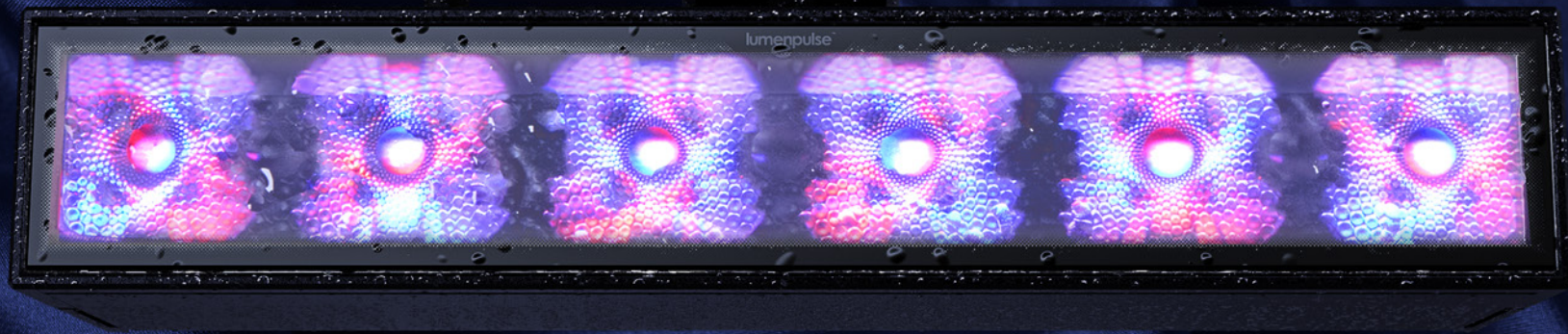


Maximum Mountings

More mounting options to meet the needs of every application.



Maximum Quality



NVR

Buildings and
Fixed Structures



VRN

Pole-Mounts



VRBO

Bridges and
Overpasses

Good Vibrations

No matter the "vibes," the Lumenfacade Max always keeps the light "real."

VRN vibration rating for normal applications, VRBO vibration rating for bridges and overpasses. Tested to ANSI 136.31 2018.

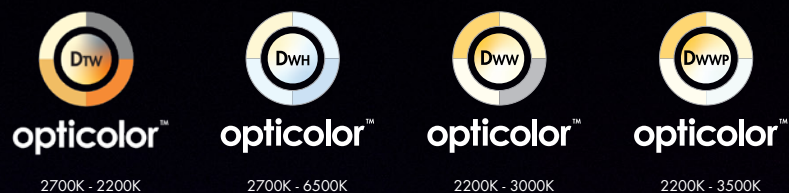
Static White



Static Colour



Dynamic White



Colour Changing



Colour and Colour Temperatures

A symphony of hues, shifting the spirit of architecture—brightening, softening, and shaping space with every subtle turn.





From Warm to Wild— Master Your Light

Opticolor+™ brings together dynamic Colour Changing, Dynamic White, Dim-to-Warm, and Static White in a single, powerful luminaire. Driven by Optidrive™, it delivers bold, vibrant illumination with the precision, consistency, and versatility to redefine any architectural space.

THE EVERYDAY

THE BIG EVENT

optidrive™

All the Gain, None of the Pain

Optidrive™ is a Lumenpulse proprietary technology that optimises an individual colour, or colour mix, to its maximum available output while maintaining Lumenpulse's legendary colour consistency and quality of light. Opticolor gives you three incredible benefits: Colour Gain, Colour Balance, and virtually, two fixtures in one.

A large cable-stayed bridge at night, illuminated with vibrant green and blue lights. The bridge features two prominent white towers with arched openings. The city skyline is visible in the background under a dark blue sky.

extendX™

Longer Runs, Fewer Boxes, Maximum Efficiency

ExtendX™ is Lumenpulse's cutting-edge control technology that takes your lighting projects further, literally and figuratively. By enabling longer fixture runs with fewer control boxes, ExtendX reduces costs, simplifies installations, and maximizes efficiency. With the power to transmit up to four universes of DMX through a single line, it ensures flawless signal integrity and offers incredible flexibility for even the most complex lighting designs. The perfect solution for seamless, large-scale installations.

Optimal Optics

Ceiling Asymmetric and Narrow Asymmetric beam spreads broaden your linear applications. Clear, Frosted, and Half-Frosted lenses are standard options. Optimally designed, seamless accessories that emphasize optical performance.

Static White optic visually different than image shown here.

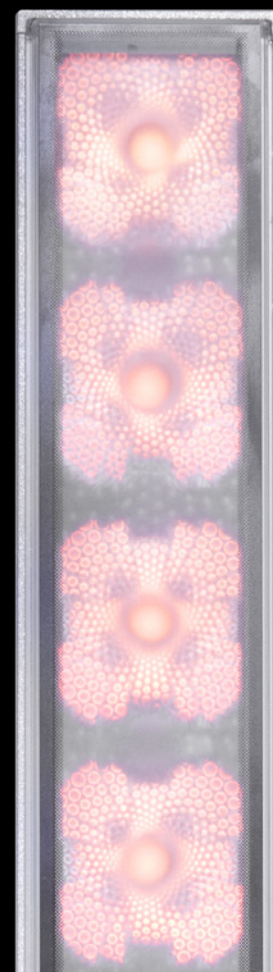
Clear



Half-Frosted



Frosted





Real images of fixture, RGBW all on. Setback: 100mm from black wall.

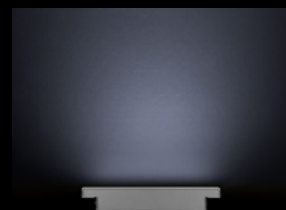
Half-Frosted



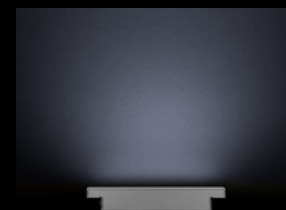
10° x 10°



10° x 30°



10° x 60°



10° x 90°



Narrow Asymmetric

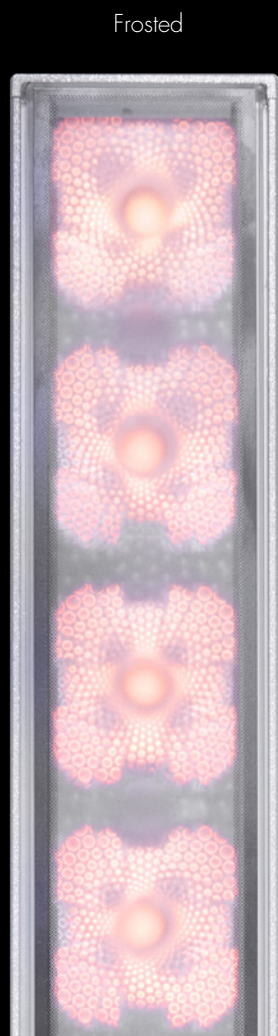


Asymmetric Wallwash

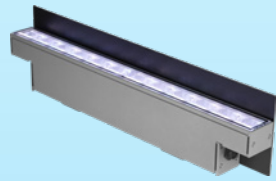
Pristine Precision

Lumenpulse's optimized optics put light exactly where you want and need it, regardless of the application.

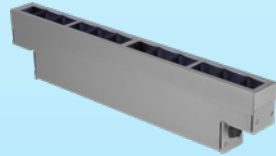
Real images of fixture, RGBW all on. Setback: 100mm from black wall.



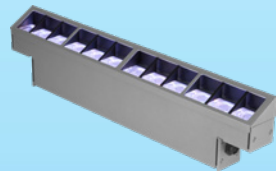
Real images of fixture, RGBW all on. Setback: 100mm from black wall.



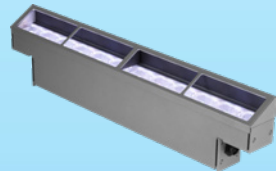
1



2



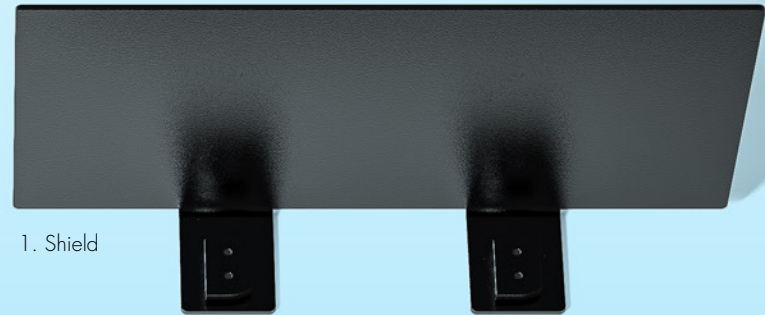
3



4

Adaptable Advantages

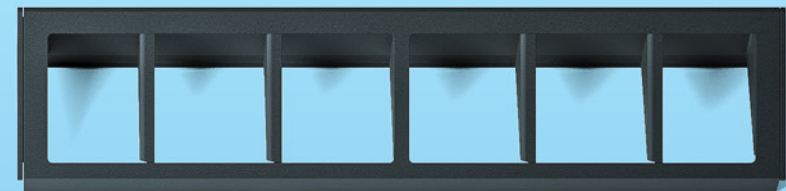
The menagerie of accessories has been curated to deliver precise position and architecturally attuned aesthetics. Installers will appreciate the ease of use and integrated cable-management.



1. Shield



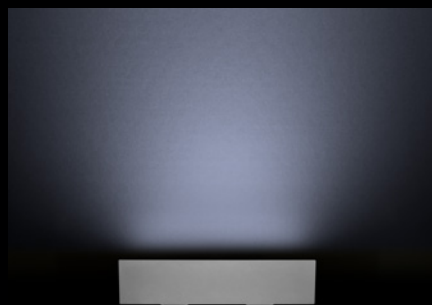
2. Radial Louvre



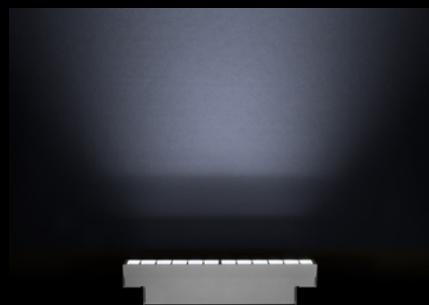
3. Radial Louvre Asymmetric



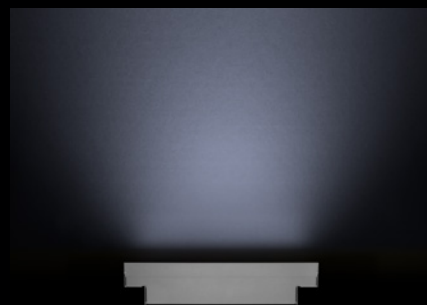
4. Visor



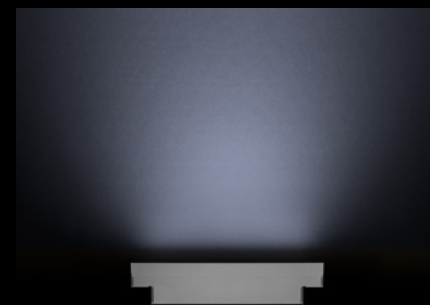
10° x 60° Shield



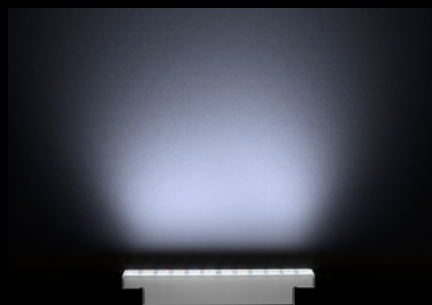
10° x 60° Radial Louvre



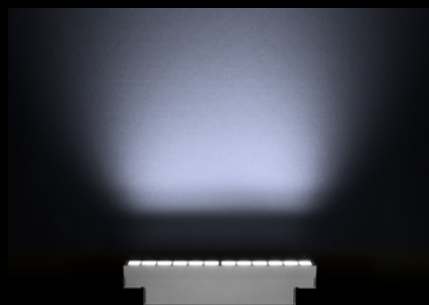
10° x 60° Radial Louvre Asymmetric



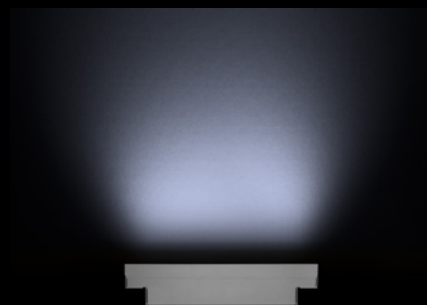
10° x 60° Visor



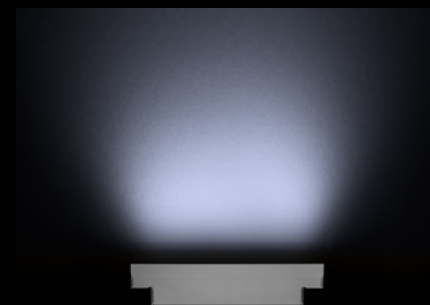
60° x 60°



60° x 60° Radial Louvre



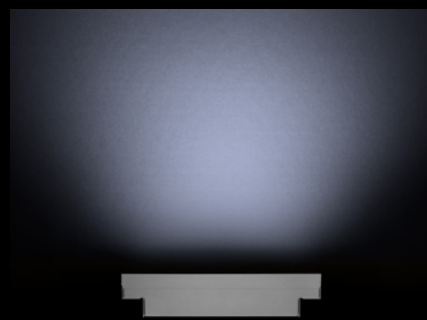
60° x 60° Radial Louvre Asymmetric



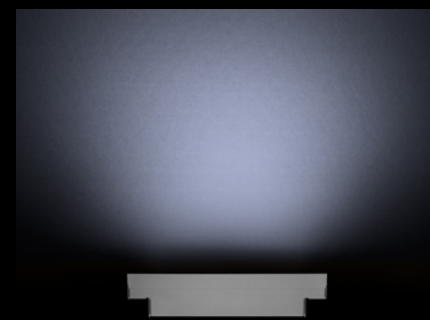
60° x 60° Visor



Wallwash Shield



Wallwash Radial Louvre Asymmetric



Wallwash Visor

Real images of fixture. Setback: 100mm from black wall.



Grazing



Flooding



Wallwashing

Optical Flexibility

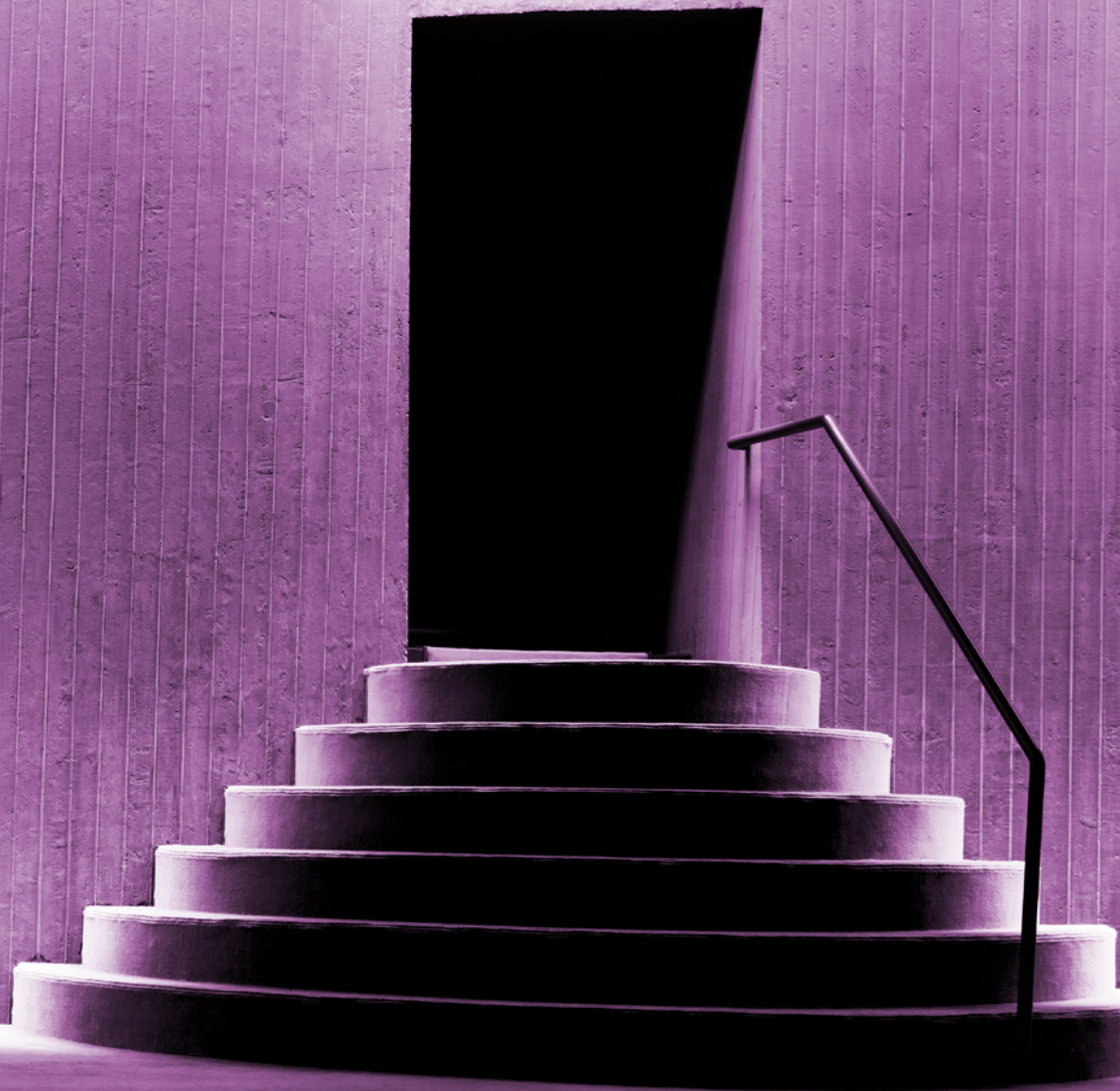
The Lumenfacade family's flexibility makes them a sure fit for custom, case-by-case designs. Each luminaire gives designers the tools to tackle all aspects of any project. Whether it be cornices or columns, window arches or textured concrete, the Lumenfacade is capable of ushering a design vision into reality.

Grazing

Graze lighting, or wall grazing, is directional light at an acute angle, which emphasises textured surfaces and adds a third dimension to a façade. When grazing, luminaires must be mounted extremely close to the building surface, with precise optical control creating a continuous narrow blade of light. Lumenpulse's versatile and extremely option-rich Lumenfacade Max has been designed for a range of grazing applications.

Covering all the Angles

8° x 8°
10° x 10°
10° x 30°
10° x 60°
10° x 90°



Grazing Distributions Colour Changing



3048mm Wall

LFM-120_277-48-10W-MRGBW40K-10x60-HFR
Spacing: 51mm | Setback: 204mm



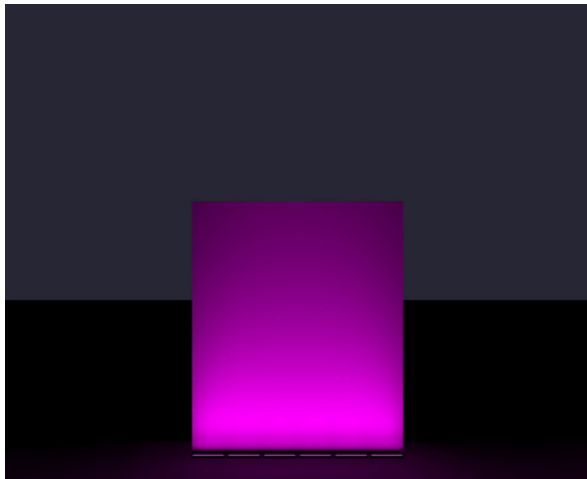
4572mm Wall

LFM-120_277-48-10W-MRGBW40K-10x60-HFR
Spacing: 51mm | Setback: 229mm



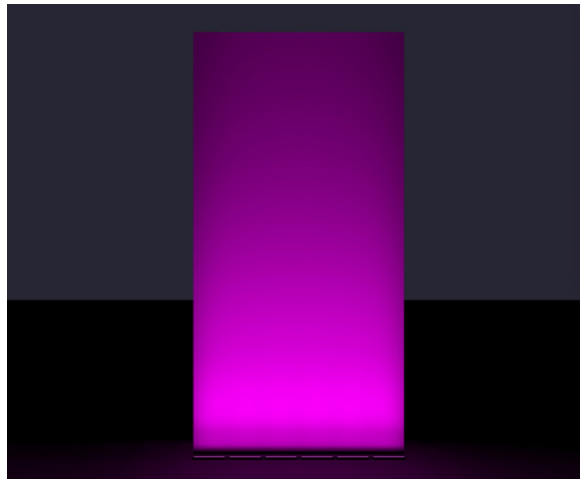
6096mm Wall

LFM-120_277-48-10W-MRGBW40K-10x30-HFR
Spacing: 51mm | Setback: 305mm



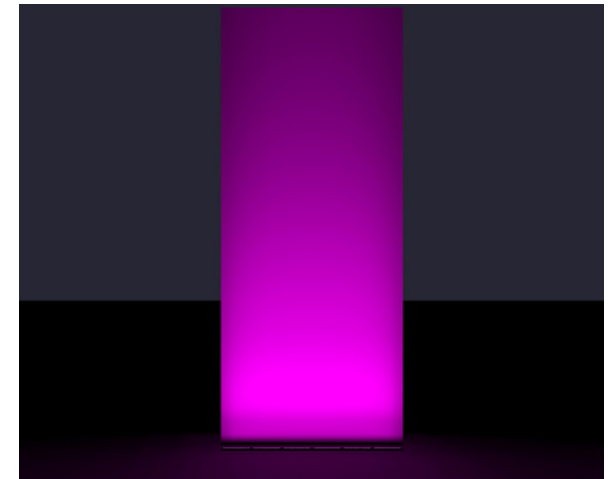
9144mm Wall

LFM-120_277-48-22W-MRGBW40K-10x30-HFR
Spacing: 51mm | Setback: 381mm



15240mm Wall

LFM-120_277-48-22W-MRGBW40K-10x10-HFR
Spacing: 51mm | Setback: 533mm

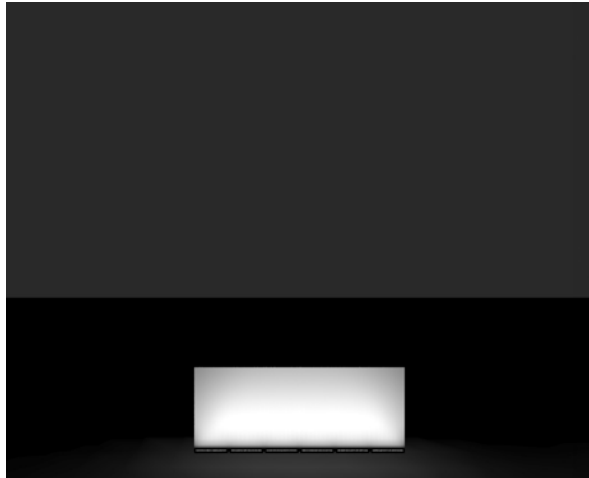


18288mm Wall

LFM-120_277-48-22W-MRGBW40K-10x10-HFR
Spacing: 9.5mm | Setback: 686mm

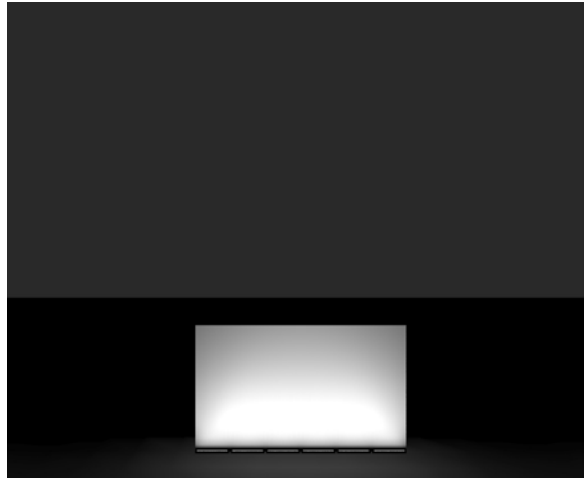
* All spacing is measured between ends of fixtures.

Grazing Distributions Static White



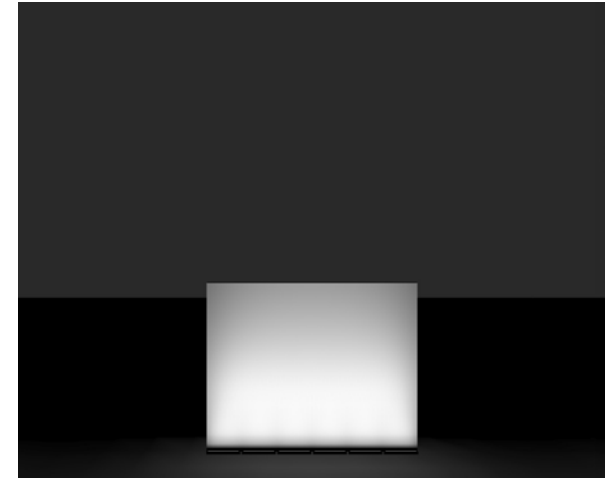
3048mm Wall

LFM-120_277-48-10W-40K-10x60-HFR
Spacing: 51mm | Setback: 204mm



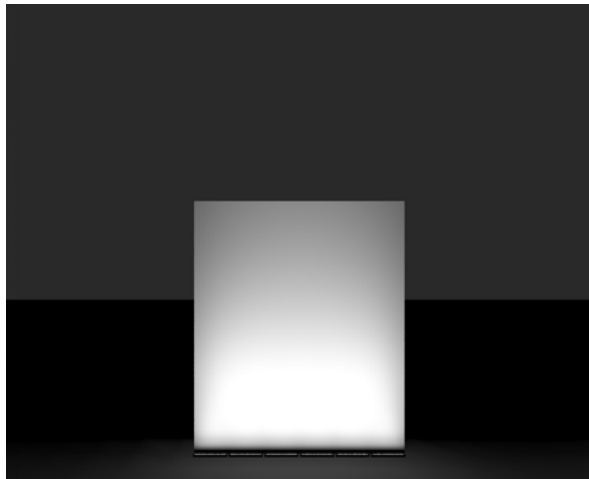
4572mm Wall

LFM-120_277-48-10W-40K-10x60-HFR
Spacing: 51mm | Setback: 229mm



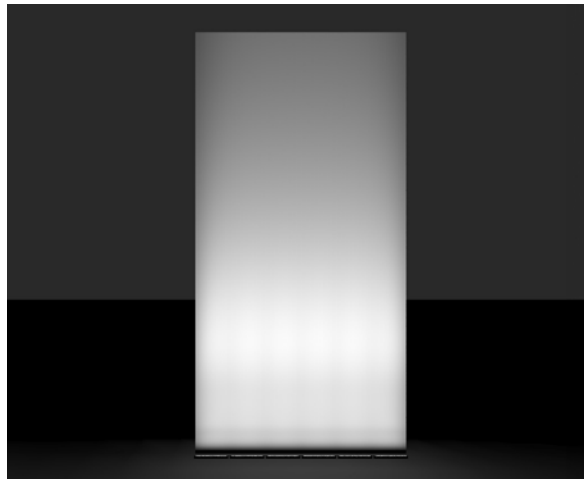
6096mm Wall

LFM-120_277-48-10W-40K-10x30-HFR
Spacing: 51mm | Setback: 305mm



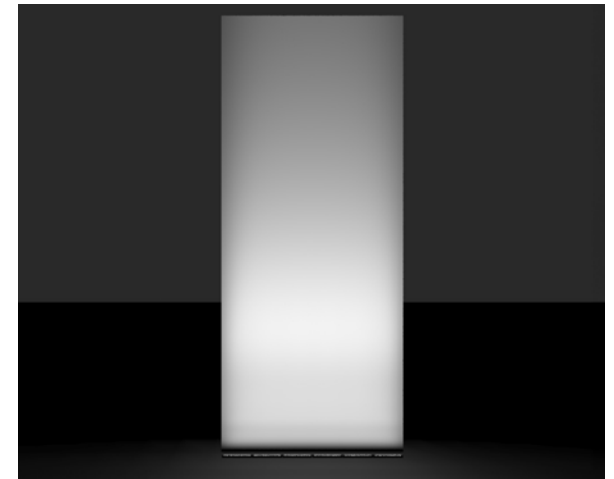
9144mm Wall

LFM-120_277-48-22W-40K-10x30-HFR
Spacing: 51mm | Setback: 381mm



15240mm Wall

LFM-120_277-48-22W-40K-10x10-HFR
Spacing: 51mm | Setback: 533mm



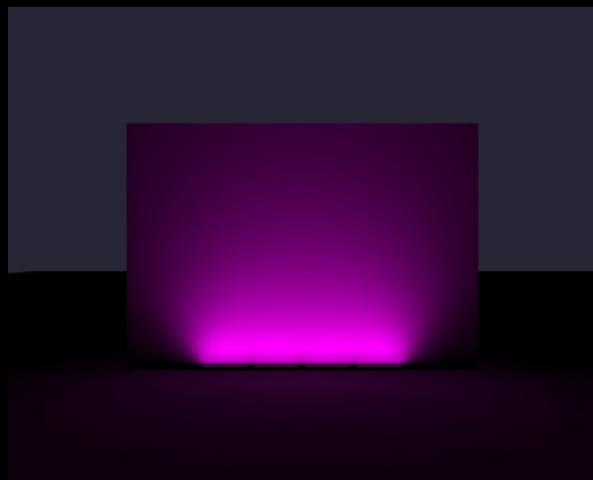
18288mm Wall

LFM-120_277-48-22W-40K-10x10-HFR
Spacing: 9.5mm | Setback: 686mm

* All spacing is measured between ends of fixtures.

Graze Spacing

Walls: 6096mm | Setback: 152mm | Fixtures: LFM-120_277-48-22W-MRGBW40K-10x60-HFR



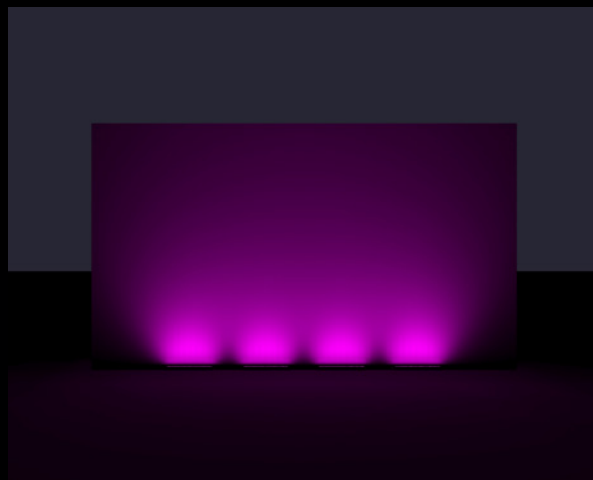
Minimum spacing between fixtures is 9.5mm.



Spacing between fixtures at 152mm.



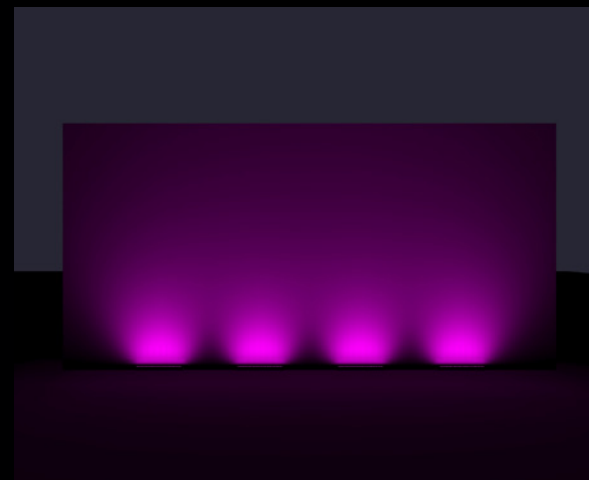
Spacing between fixtures at 305mm.



Spacing between fixtures at 610mm.



Spacing between fixtures at 914mm.



Spacing between fixtures at 1219mm.

* All spacing is measured between ends of fixtures.



Flooding

Flood lighting has a wide range of applications, requiring a variety of optics and luminous output. LEDs deliver uniform, consistent light that is ideal for flood lighting because of their precise controls and long-term durability.

Pick Your Brush Size

30° x 30°
30° x 60°
60° x 60°
90° x 90°

Flooding Distributions



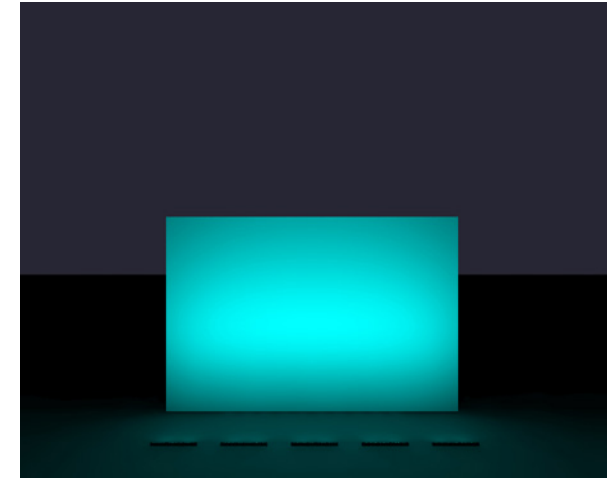
3048mm Wall

LFM-120_277-48-10W-MRGBW40K-90x90-FR
Spacing: 610mm | Setback: 1829mm



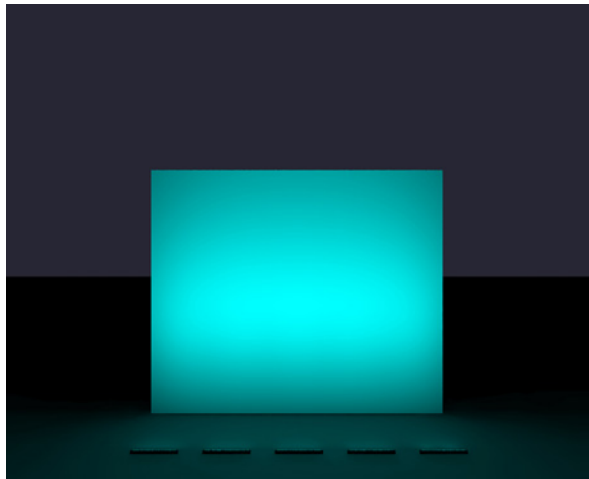
4572mm Wall

LFM-120_277-48-10W-MRGBW40K-60x60-FR
Spacing: 610mm | Setback: 1981mm



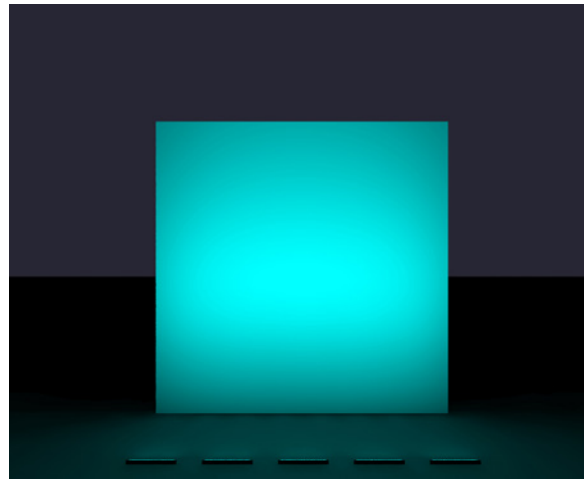
6096mm Wall

LFM-120_277-48-10W-MRGBW40K-30x60-FR
Spacing: 610mm | Setback: 2286mm



7620mm Wall

LFM-120_277-48-10W-MRGBW40K-30x30-FR
Spacing: 610mm | Setback: 2591mm



9144mm Wall

LFM-120_277-48-22W-MRGBW40K-30x30-FR
Spacing: 610mm | Setback: 3048mm



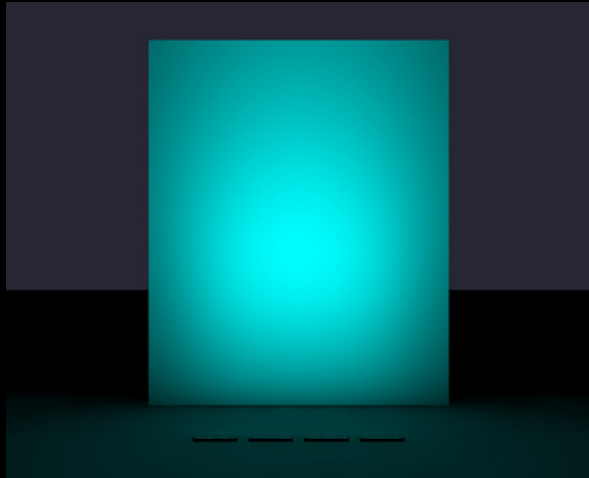
12192mm Wall

LFM-120_277-48-22W-MRGBW40K-30x30-FR
Spacing: 305mm | Setback: 3505mm

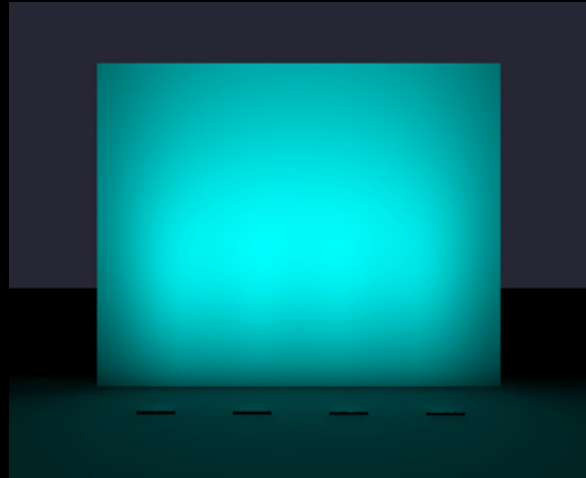
* All spacing is measured between ends of fixtures.

Flood Spacing

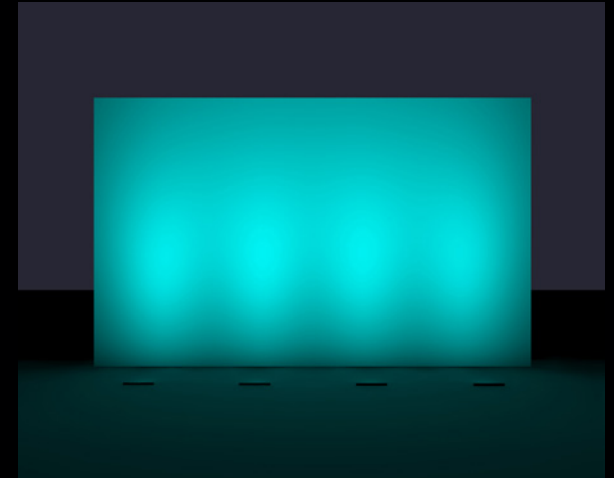
Walls: 12192mm | Setback: 3505mm | Fixtures: LFM-120_277-48-22W-MRGBW40K-30x30-FR



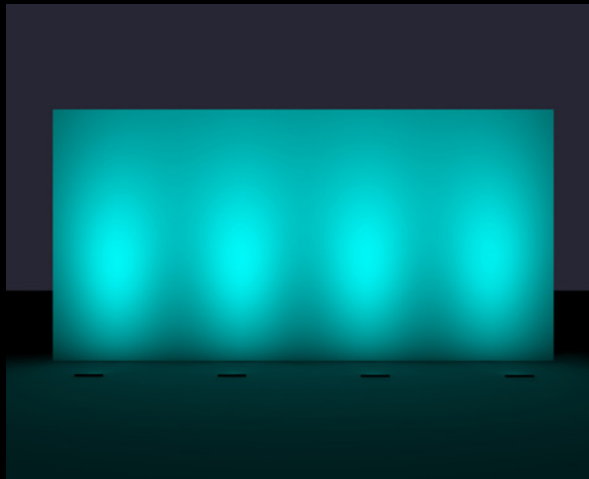
Spacing between fixtures at 305mm.



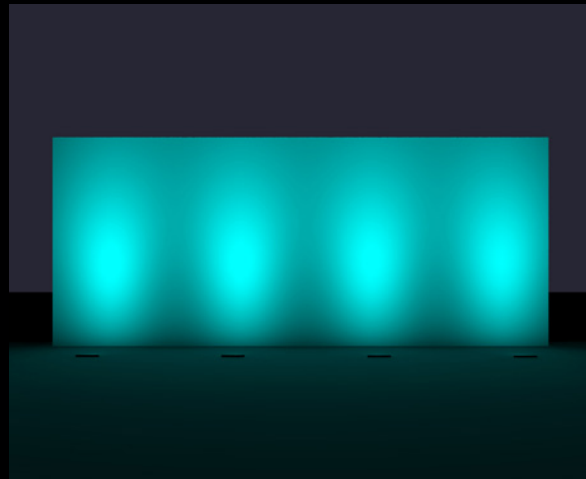
Spacing between fixtures at 1829mm.



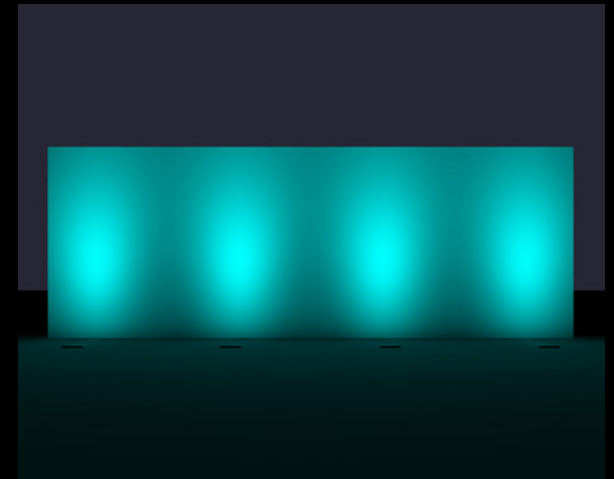
Spacing between fixtures at 1305mm.



Spacing between fixtures at 11829mm.



Spacing between fixtures at 2305mm.



Spacing between fixtures at 21829mm.

* All spacing is measured between ends of fixtures.



Wallwashing

Wallwashing uses vertical, indirect lighting, which has been placed at an optimal distance and angle from a wall, to create a smooth "wash" effect. Wallwashing is often used to hide rough imperfections, eliminate shadows, and uniformly light up a wall. The Lumenfacade Max has the optics needed to create a clean, impressive wallwash on any number of surfaces and surface heights.

Washing Isn't a Chore

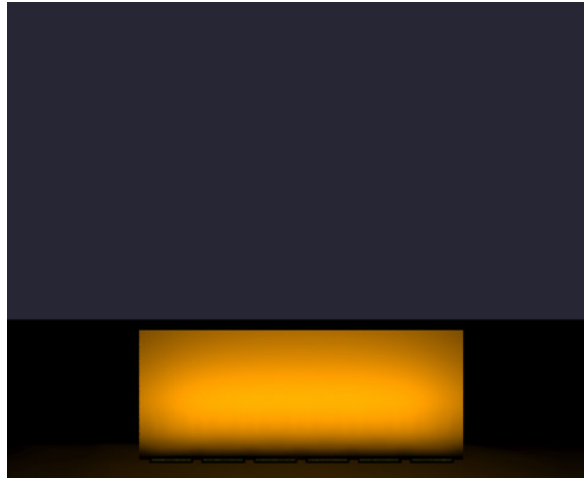
Wallwash
Narrow Asymmetric
Ceiling Asymmetric

Wallwashing Examples



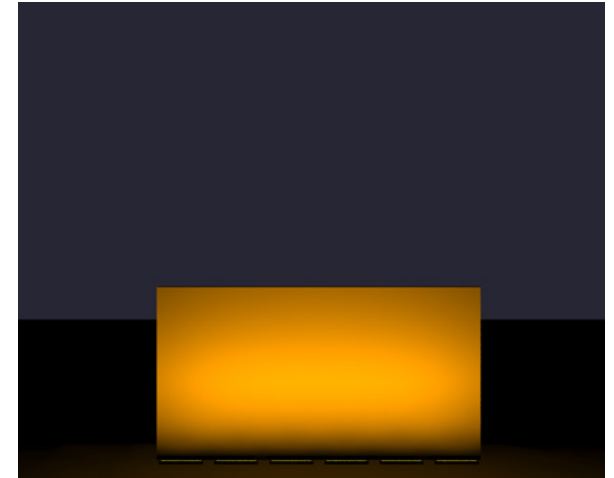
2438mm Wall

LFM-120_277-48-10W-MRGBW40K-VVV-HFR
Spacing: 152mm | Setback: 305mm



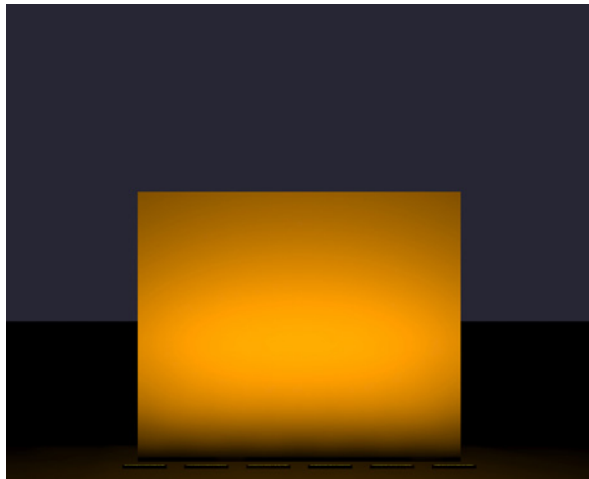
3658mm Wall

LFM-120_277-48-10W-MRGBW40K-VVV-HFR
Spacing: 229mm | Setback: 457mm



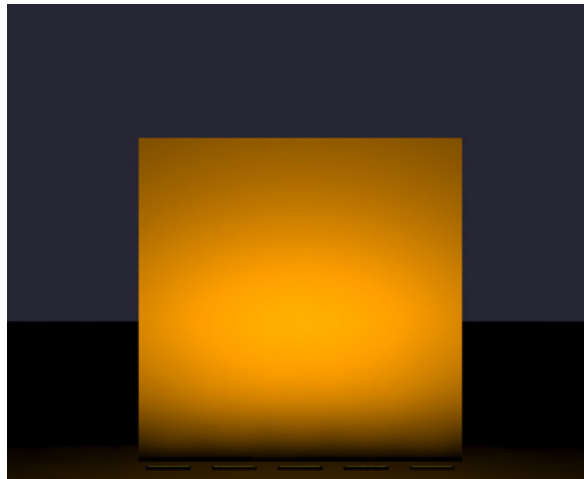
4877mm Wall

LFM-120_277-48-10W-MRGBW40K-VVV-HFR
Spacing: 305mm | Setback: 610mm



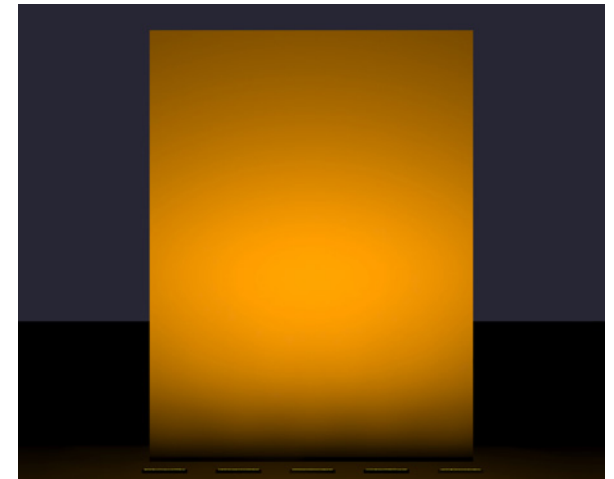
7620mm Wall

LFM-120_277-48-22W-MRGBW40K-VVV-HFR
Spacing: 475mm | Setback: 951mm



9144mm Wall

LFM-120_277-48-22W-MRGBW40K-VVV-HFR
Spacing: 573mm | Setback: 1143mm

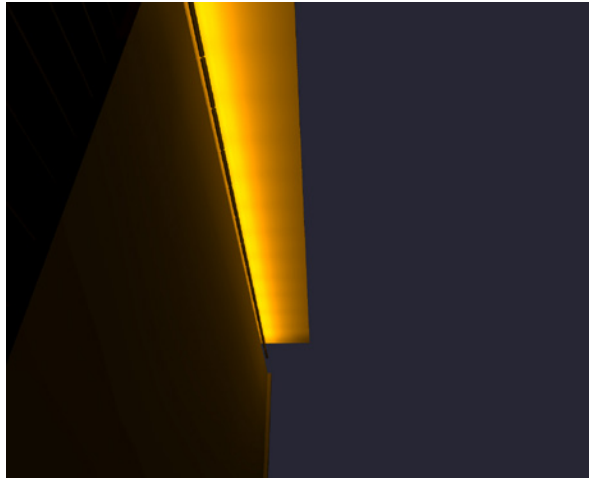


12192mm Wall

LFM-120_277-48-22W-MRGBW40K-VVV-HFR
Spacing: 762mm | Setback: 1524mm

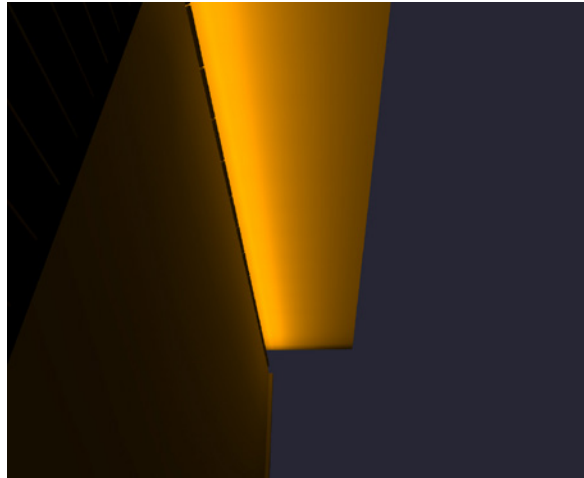
* All spacing is measured between ends of fixtures.

Asymmetric Examples



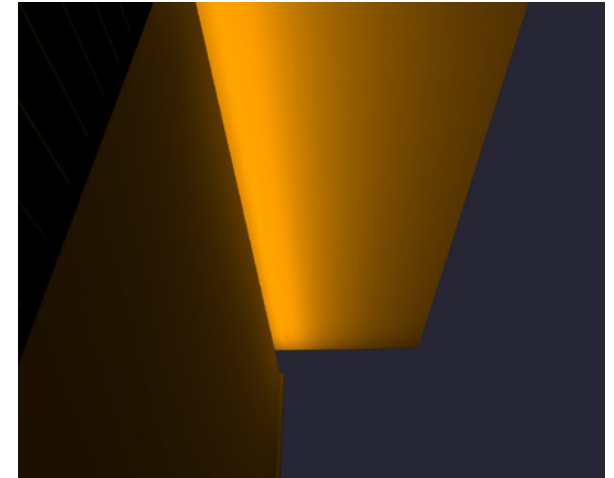
1829mm Canopy

LFM-120_277-48-10W-MRGBW40K-CAS-CL
No space between fixtures | Setback: 366mm



3658mm Canopy

LFM-120_277-48-10W-MRGBW40K-CAS-CL
No space between fixtures | Setback: 732mm



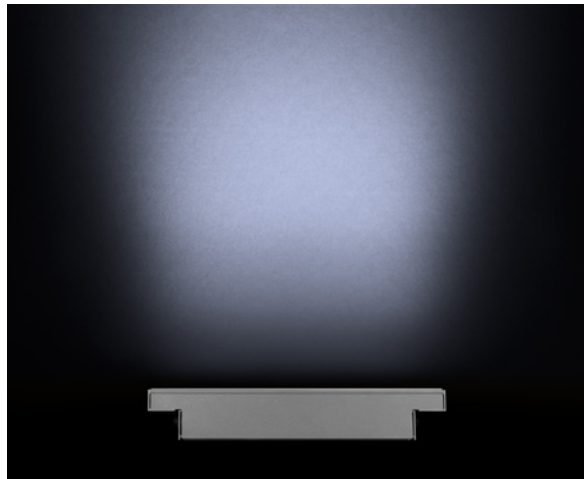
6096mm Canopy

LFM-120_277-48-10W-MRGBW40K-CAS-CL
No space between fixtures | Setback: 1219mm



Ceiling Asymmetric (CAS)

1:5 setback | Canopy depth ratio
No space between fixtures



Narrow Asymmetric (NAS)

1:12 setback ratio, 152mm minimum setback
No space between fixtures

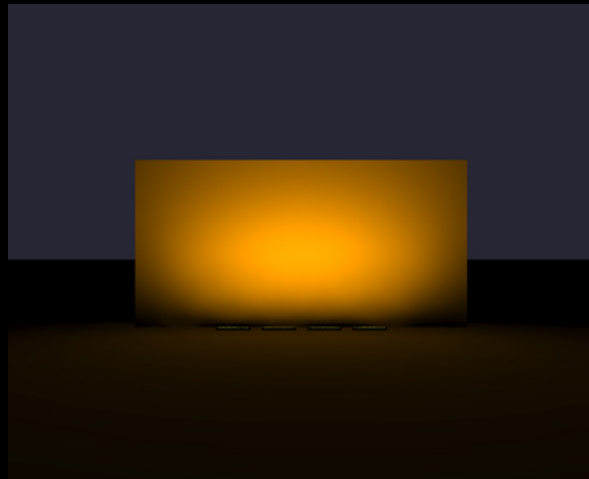


Asymmetric Wallwash (WW)

1:8 setback ratio, 152mm minimum setback
Space between fixtures = 1/2 setback

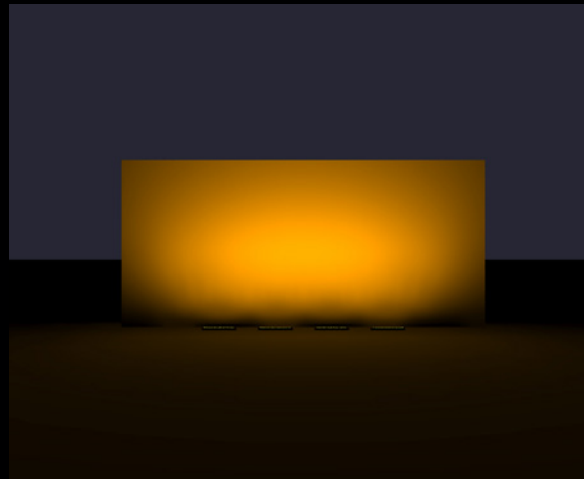
Wallwash Spacing

Walls: 6096mm | Setback: 762mm | Fixtures: LFM-120-277-48-10W-MRGBW40K-VWW-HFR



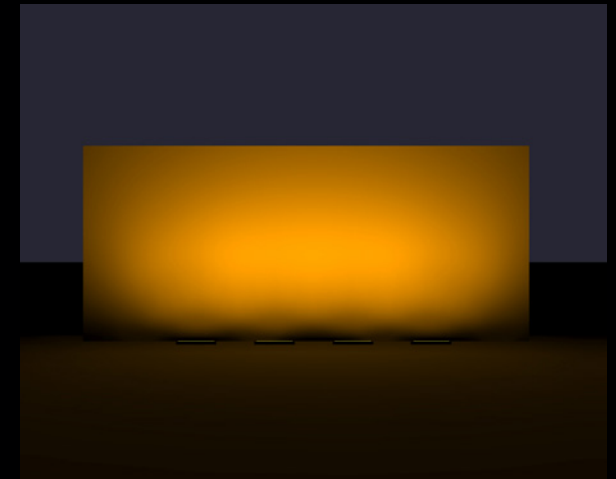
Recommended Ratio

Recommendation ratio is: Setback = 1/8 wall height,
Spacing = setback / 2 | Spacing: 381mm



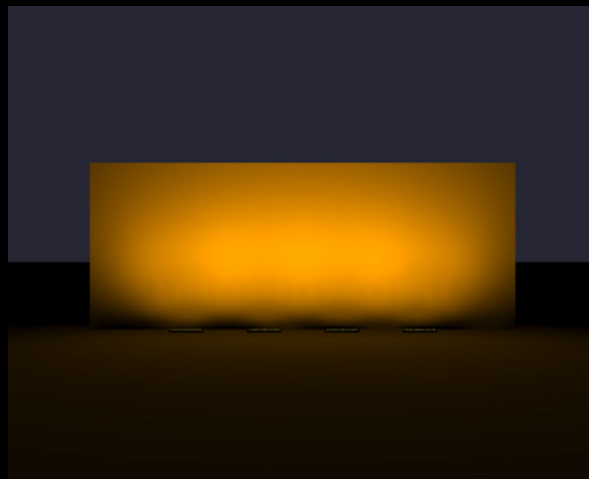
2x Recommended Ratio

Spacing: 762mm



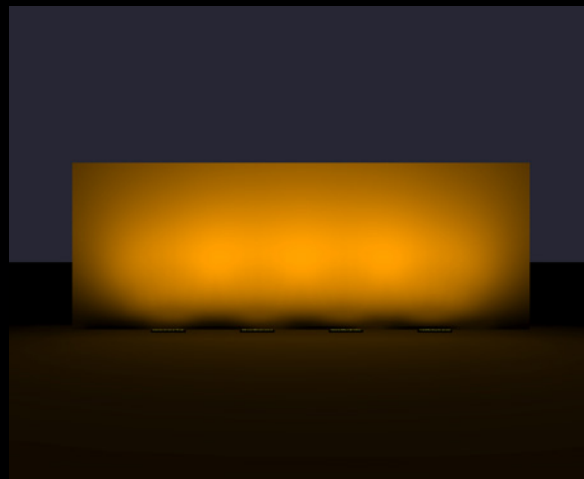
3x Recommended Ratio

Spacing: 1143mm



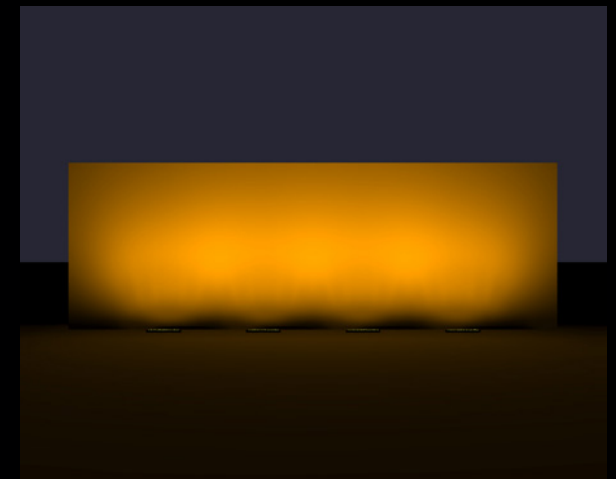
4x Recommended Ratio

Spacing: 1524mm



5x Recommended Ratio

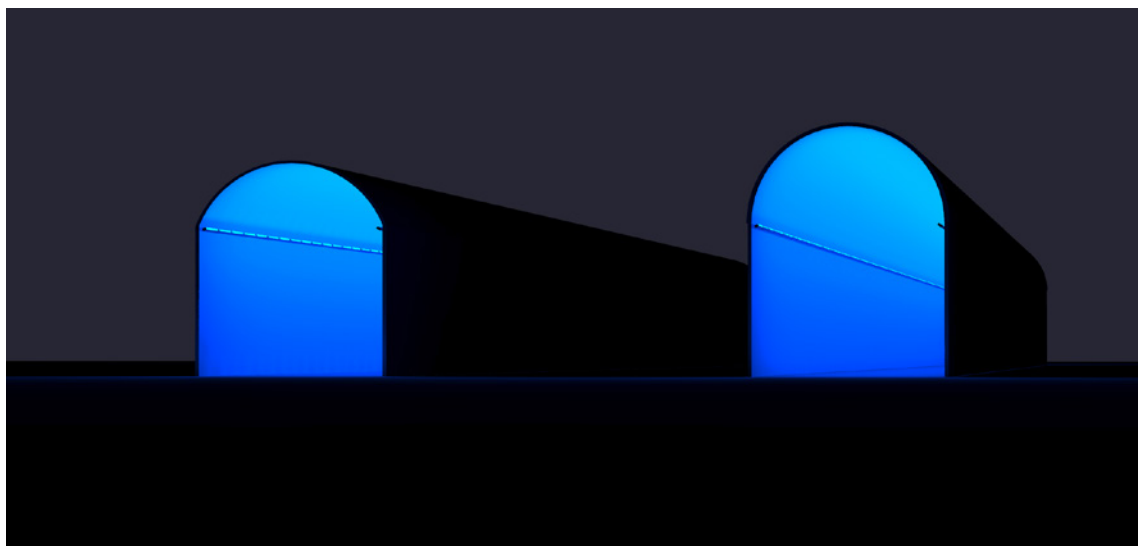
Spacing: 1905mm



6x Recommended Ratio

Spacing: 2286mm

* All spacing is measured between ends of fixtures.

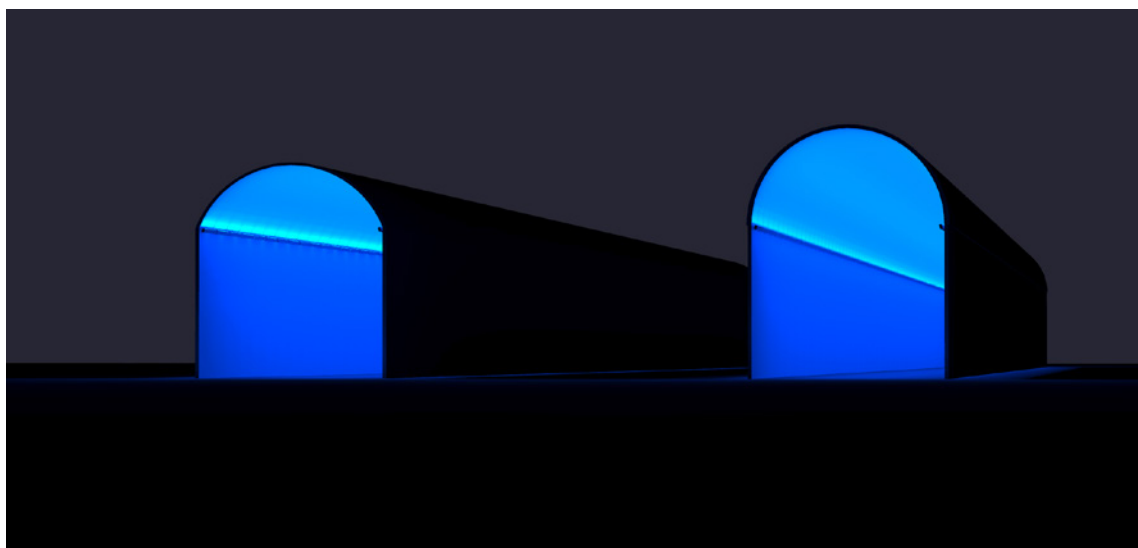
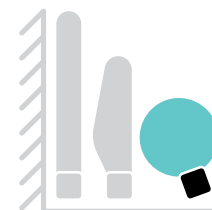


Arched Ceiling 4572mmW x 1524mmH
LFM-120_277-48-10W-MRGBW40K-60x60-FR

Minimum Spacing (9.5mm)

Arched Ceiling 4572mmW x 2286mmH
LFM-120_277-48-10W-MRGBW40K-60x60-FR

Minimum Spacing (9.5mm)



Arched Ceiling 4572mmW x 1524mmH
LFM-120_277-48-10W-MRGBW40K-CAS-CL

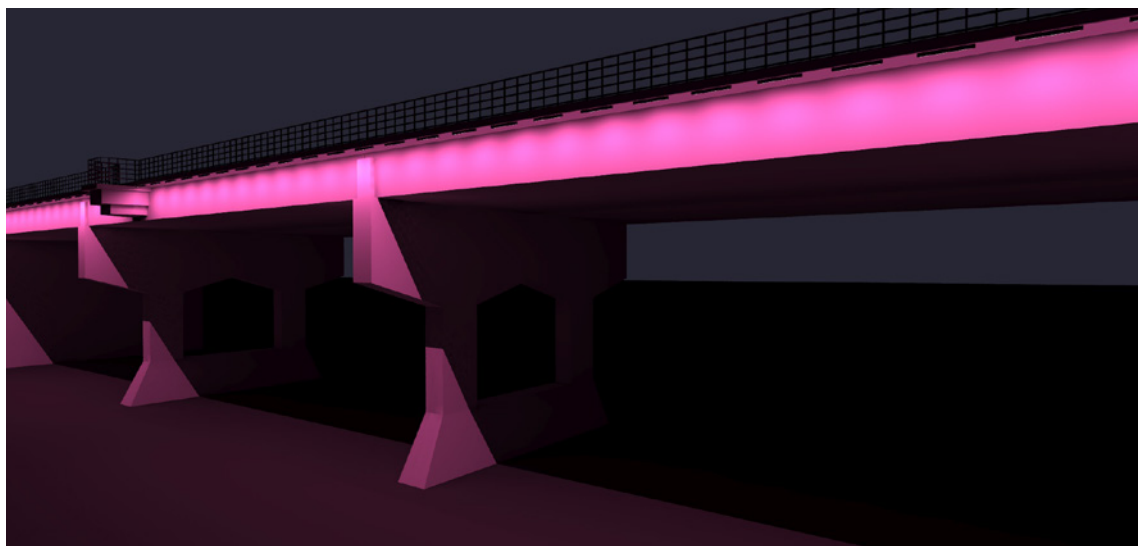
Minimum Spacing (9.5mm)

Arched Ceiling 4572mmW x 2286mmH
LFM-120_277-48-10W-MRGBW40K-CAS-CL

Minimum Spacing (9.5mm)

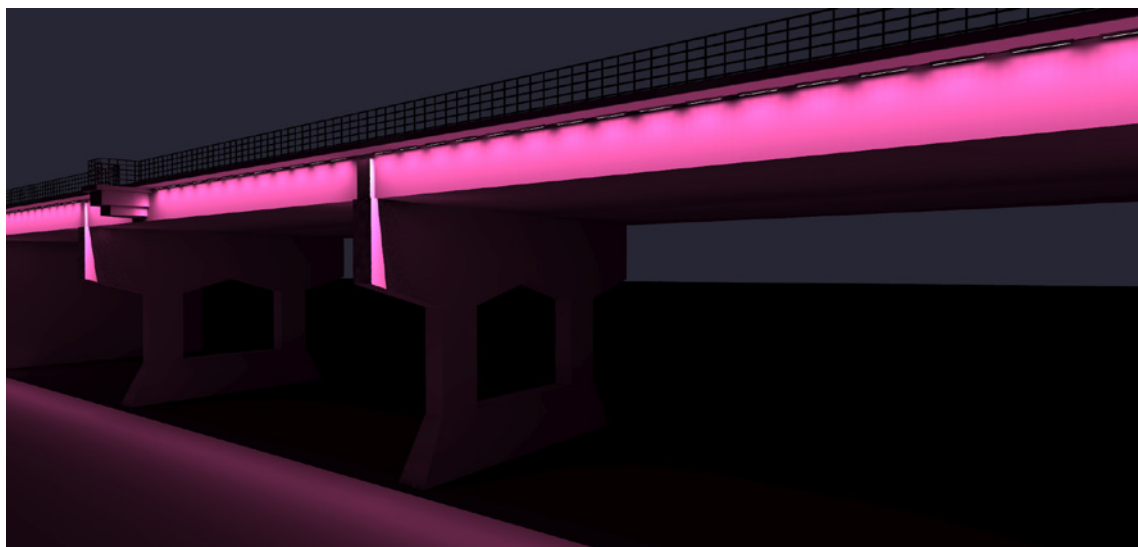


* All spacing is measured between ends of fixtures.



Bridge Girder (1768mm high surface) LFM-120_277-48-10W-MRGBW40K-W-FR

Spacing: 762mm | Setback: 1067mm

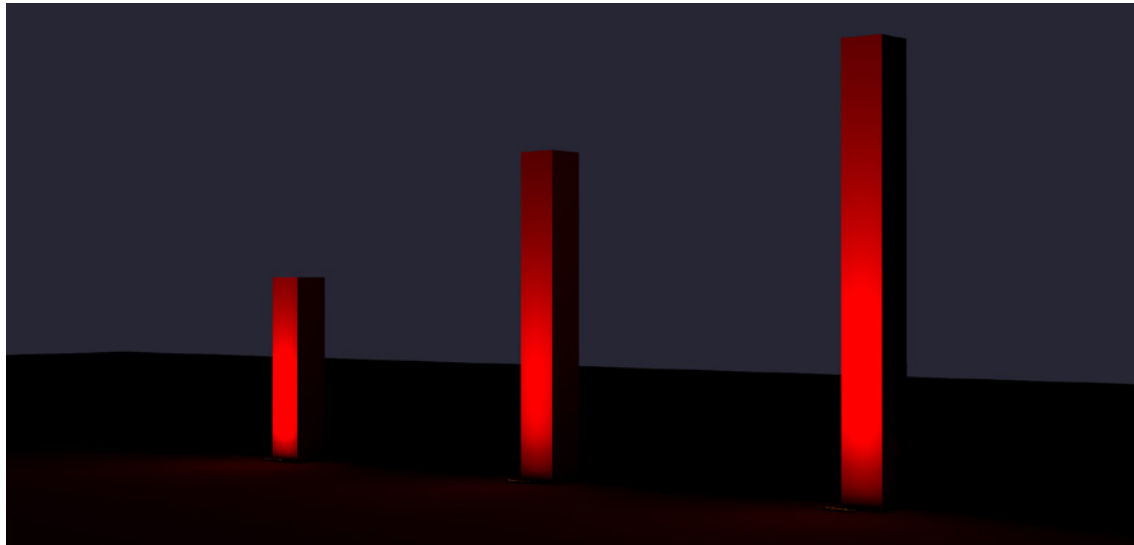


Bridge Girder (1768mm high surface) : LFM-120_277-48-10W-MRGBW40K-10x90-HFR

Spacing: 457mm | Setback: 229mm



* All spacing is measured between ends of fixtures.



7620mmH Column:
LFM-120_277-48-10W-
MRGBW40K-NAS-HFR

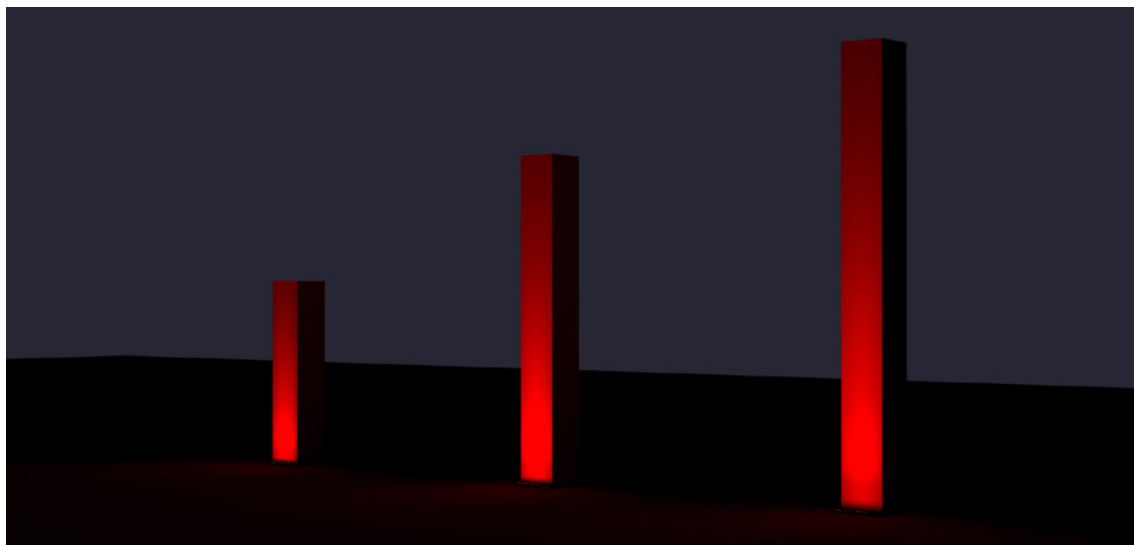
Setback: 762mm

12192mmH Column:
LFM-120_277-48-10W-
MRGBW40K-NAS-HFR

Setback: 1219mm

15240mmH Column:
LFM-120_277-48-22W-
MRGBW40K-NAS-HFR

Setback: 1524mm



7620mmH Column:
LFM-120_277-48-10W-
MRGBW40K-10x10-HFR

Setback: 305mm

12192mmH Column:
LFM-120_277-48-22W-
MRGBW40K-10x10-HFR

Setback: 457mm

15240mmH Column:
LFM-120_277-48-22W-
MRGBW40K-10x10-HFR

Setback: 610mm



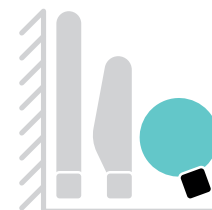


5486mmW x 1829mmH :
LFM-120_277-48-10W-MRGBW40K-30x90-FR

Spacing: 305mm | Setback: 661mm

6096mmW x 1067mmH :
LFM-120_277-48-10W-MRGBW40K-60x60-FR

Spacing: 305mm | Setback: 661mm



5486mmW x 1829mmH :
LFM-120_277-48-10W-MRGBW40K-WW-HFR

Spacing: 183mm | Setback: 305mm

* All spacing is measured between ends of fixtures.

6096mmW x 1067mmH :
LFM-120_277-48-10W-MRGBW40K-WW-HFR

Spacing: 305mm | Setback: 305mm





Corporate Headquarters

1220 Marie-Victorin Blvd.
Longueuil, QC
J4G 2H9 Canada

T +1.877.937.3003
T +1.514.937.3003
F +1.514.937.6289

info@lumenpulse.com
www.lumenpulse.com

© Lumenpulse™

2025 / 09
#158379_REV4

