

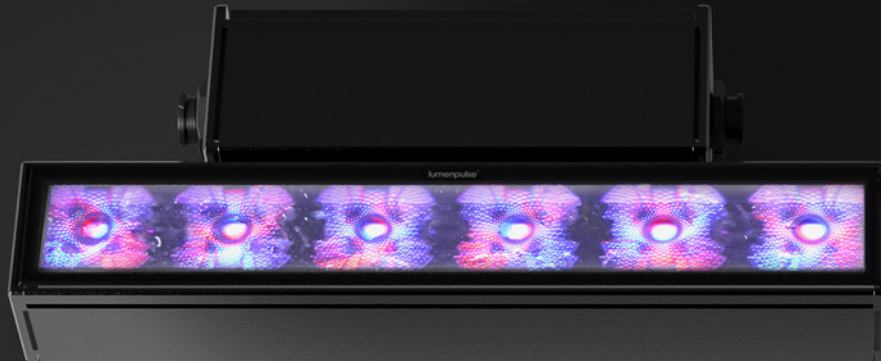
The image features three Lumenpulse linear LED light fixtures mounted on a wall with a light-colored, veined marble texture. The fixtures are arranged in a staggered, overlapping fashion. The top fixture is a dark brown/black color with a white light strip visible. The middle fixture is a solid black color. The bottom fixture is a dark grey color and includes a visible electrical connector on its side. The background on the right side of the image is a vibrant, colorful sunset or sunrise sky with orange, yellow, and purple hues.

lumenpulse™

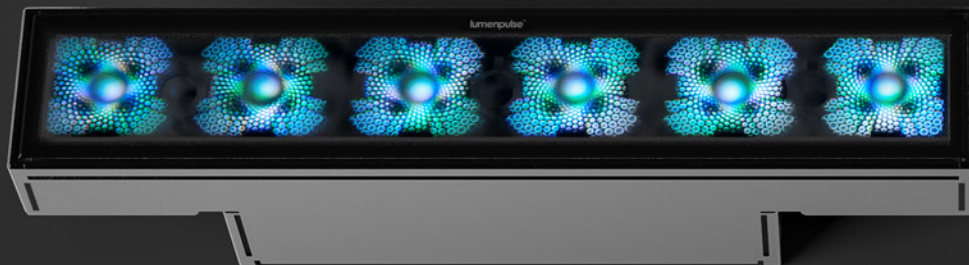
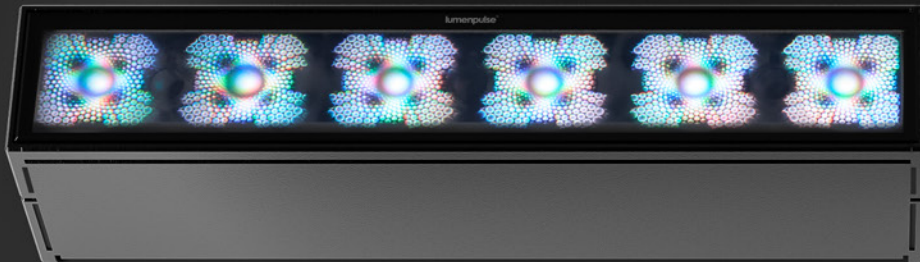
lumenfacade™ max

Mountings, Optics, and Applications

Maximum Form



True 1'



Form + Function

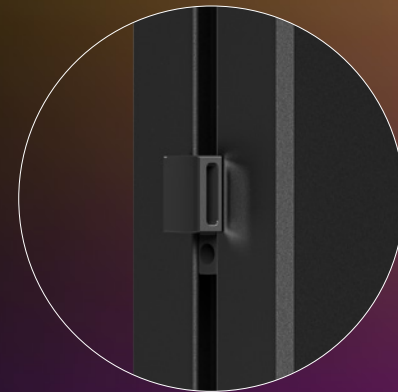
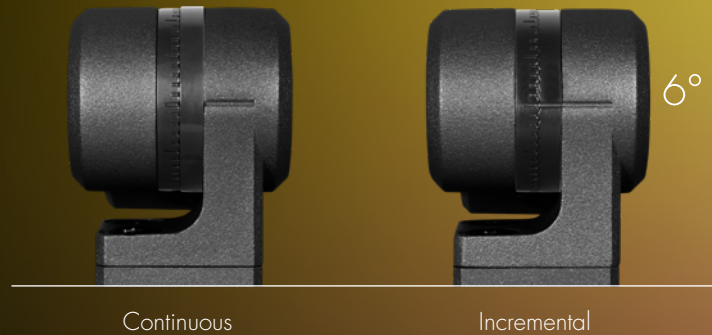
Design that dances the fine line between now and the distant future.

With one foot in the now and one foot in the future, the Lumenfacade Max exacts an unheard-of functionality for such a minimalist form.

Available in Continuous Run, Continuous Horizontal, and Standalone.

Mountings

- Mountings are optimized for beam spreads and do not require sliding the fixture on or off. Instead, click and lock the Max into place.
- Mounting arms act as a concealed cable management system, allowing vertical installations.
- Options include mountings that are continuously adjustable or calibrated in six-degree increments.



Cable Management slide

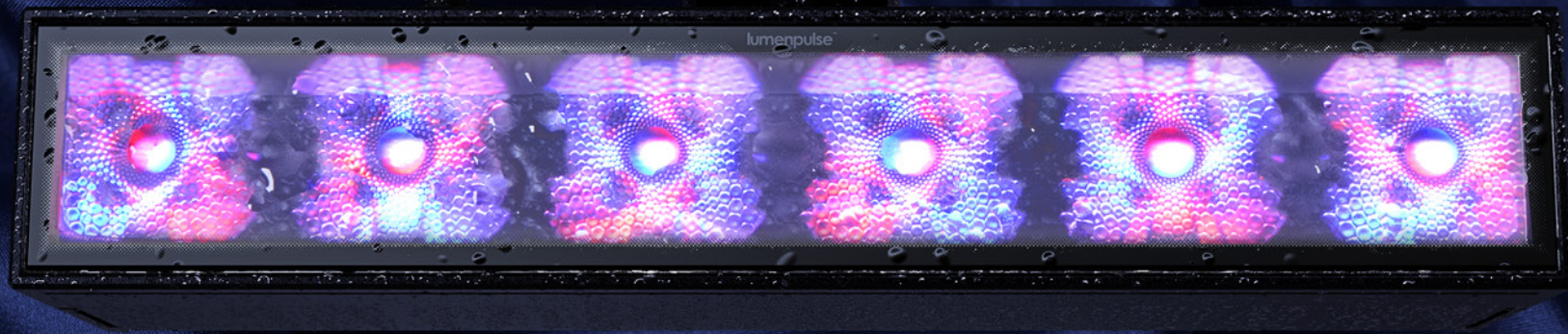


Maximum Mountings

More mounting options to meet the
needs of every application.



Maximum Quality



NVR

Buildings and
Fixed Structures



VRN

Pole-Mounts



VRBO

Bridges and
Overpasses

Good Vibrations

No matter the "vibes," the Lumenfacade Max always keeps the light "real."

VRN vibration rating for normal applications, VRBO vibration rating for bridges and overpasses. Tested to ANSI 136.31 2018.

Color and Color Temperatures

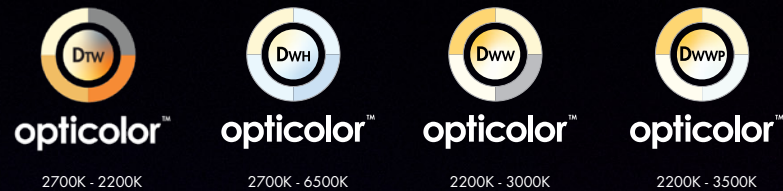
Static White



Static Color



Dynamic White



Color Changing





From Warm to Wild— Master Your Light

Opticolor+™ brings together dynamic Color Changing, Dynamic White, Dim-to-Warm, and Static White in a single, powerful luminaire. Driven by Optidrive™, it delivers bold, vibrant illumination with the precision, consistency, and versatility to redefine any architectural space.

THE EVERYDAY

THE BIG EVENT

optidrive™

All the Gain, None of the Pain

Optidrive™ is a Lumenpulse proprietary technology that optimises an individual color, or color mix, to its maximum available output while maintaining Lumenpulse's legendary colour consistency and quality of light. Opticolor gives you three incredible benefits: Color Gain, Color Balance, and virtually, two fixtures in one.

A large cable-stayed bridge at night, illuminated with vibrant green and blue lights. The bridge features two prominent white towers with arched openings. The city skyline is visible in the background under a dark blue sky.

extendX™

Longer Runs, Fewer Boxes, Maximum Efficiency

ExtendX™ is Lumenpulse's cutting-edge control technology that takes your lighting projects further, literally and figuratively. By enabling longer fixture runs with fewer control boxes, ExtendX reduces costs, simplifies installations, and maximizes efficiency. With the power to transmit up to four universes of DMX through a single line, it ensures flawless signal integrity and offers incredible flexibility for even the most complex lighting designs. The perfect solution for seamless, large-scale installations.

Optimal Optics

Ceiling Asymmetric and Narrow Asymmetric beam spreads broaden your linear applications. Clear, Frosted, and Half-Frosted lenses are standard options. Optimally designed, seamless accessories that emphasize optical performance.

Static White optic visually different than image shown here.

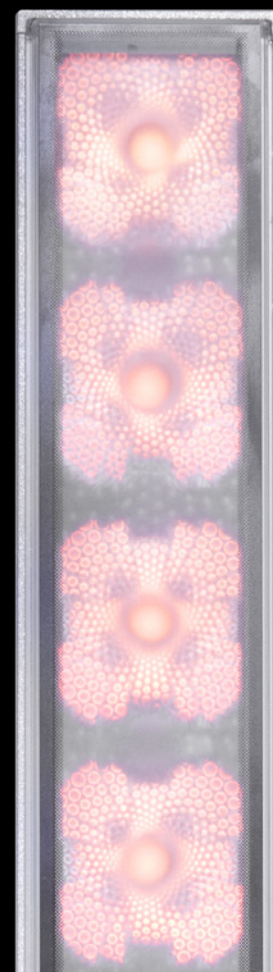
Clear



Half-Frosted



Frosted





Real images of fixture, RGBW all on. Setback: 4" from black wall.

Half-Frosted



10° x 10°



10° x 30°



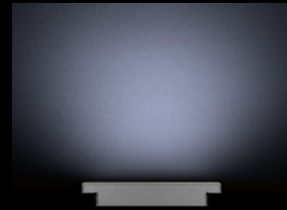
10° x 60°



10° x 90°



Narrow Asymmetric

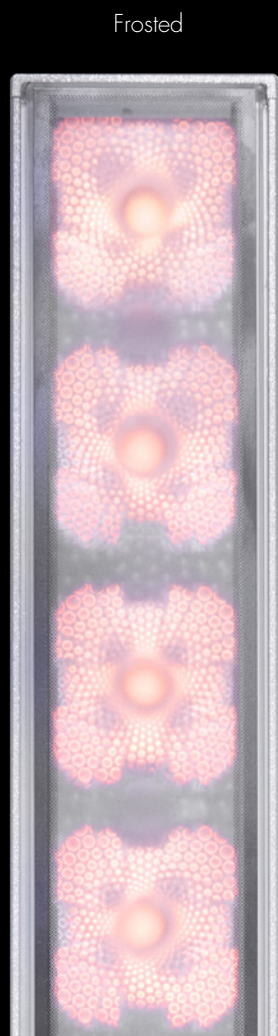


Asymmetric Wallwash

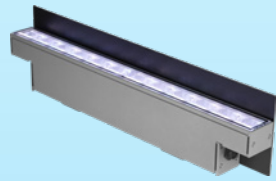
Pristine Precision

Lumenpulse's optimized optics put light exactly where you want and need it, regardless of the application.

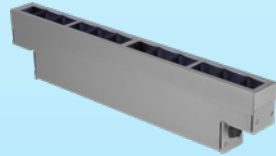
Real images of fixture, RGBW all on. Setback: 4" from black wall.



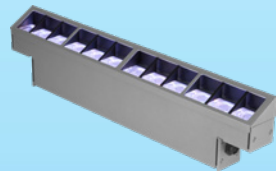
Real images of fixture, RGBW all on. Setback: 4" from black wall.



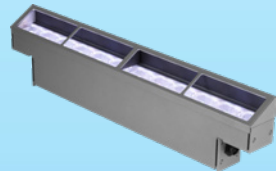
1



2



3



4

Adaptable Advantages

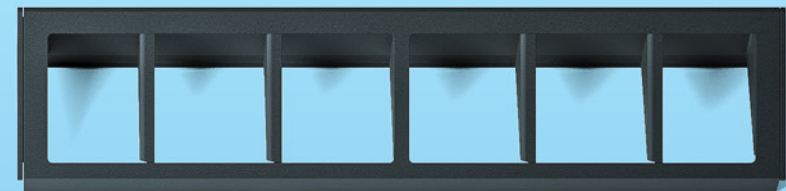
The menagerie of accessories has been curated to deliver precise position and architecturally attuned aesthetics. Installers will appreciate the ease of use and integrated cable-management.



1. Shield



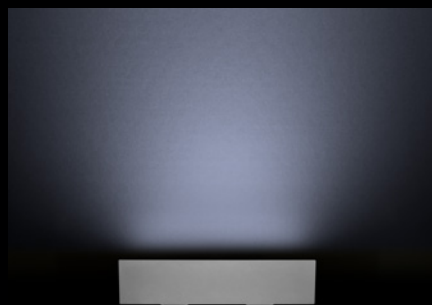
2. Radial Louver



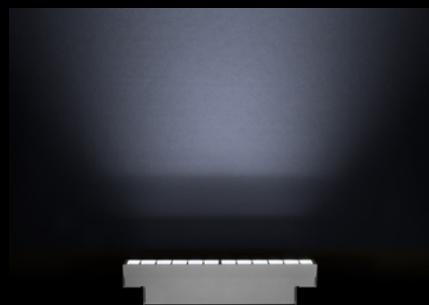
3. Radial Louver Asymmetric



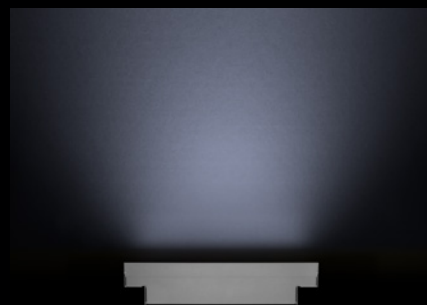
4. Visor



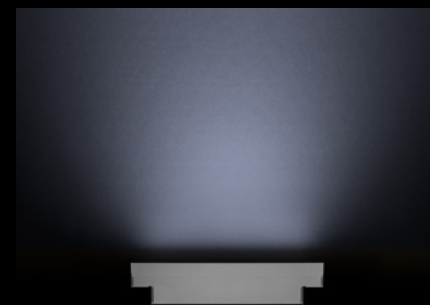
10° x 60° Shield



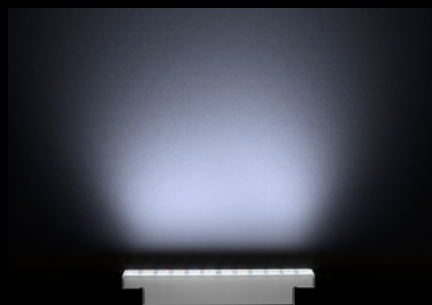
10° x 60° Radial Louver



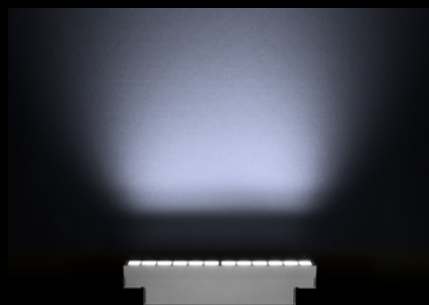
10° x 60° Radial Louver Asymmetric



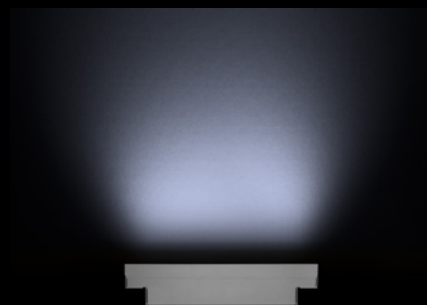
10° x 60° Visor



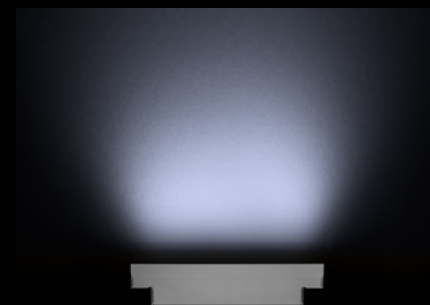
60° x 60°



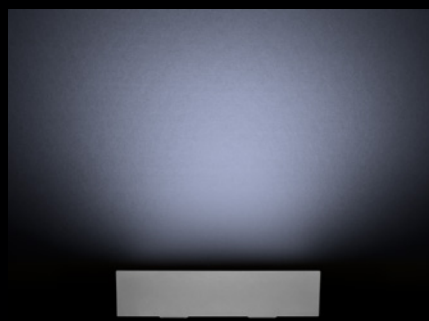
60° x 60° Radial Louver



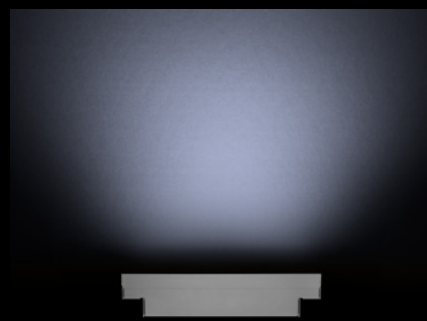
60° x 60° Radial Louver Asymmetric



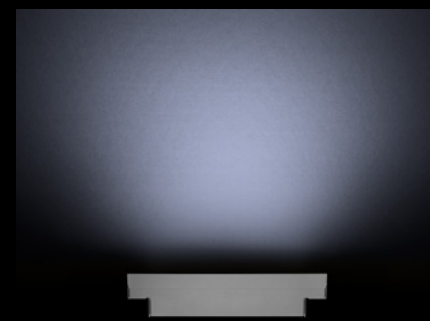
60° x 60° Visor



Wallwash Shield



Wallwash Radial Louver Asymmetric



Wallwash Visor

Real images of fixture. Setback: 4" from black wall.



Grazing



Flooding



Wallwashing

Optical Flexibility

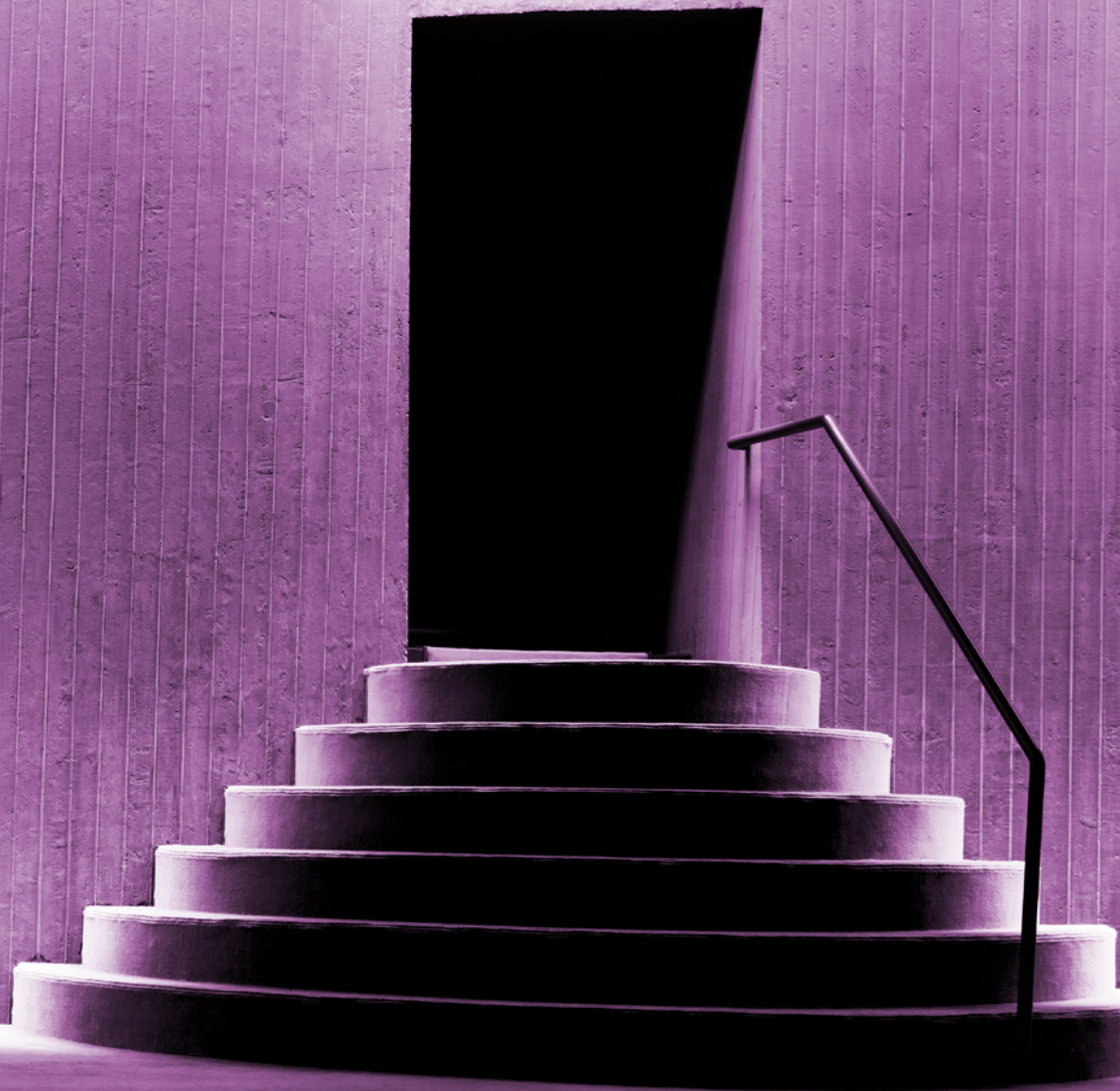
The Lumenfacade family's flexibility makes them a sure fit for custom, case-by-case designs. Each luminaire gives designers the tools to tackle all aspects of any project. Whether it be cornices or columns, window arches or textured concrete, the Lumenfacade is capable of ushering a design vision into reality.

Grazing

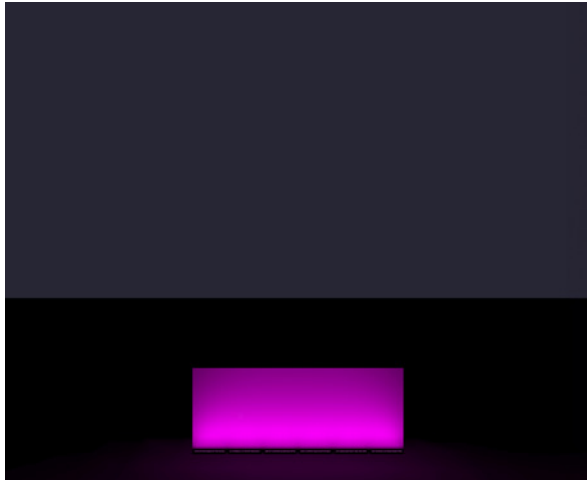
Graze lighting, or wall grazing, is directional light at an acute angle, which emphasises textured surfaces and adds a third dimension to a façade. When grazing, luminaires must be mounted extremely close to the building surface, with precise optical control creating a continuous narrow blade of light. Lumenpulse's versatile and extremely option-rich Lumenfacade Max has been designed for a range of grazing applications.

Covering all the Angles

8° x 8°
10° x 10°
10° x 30°
10° x 60°
10° x 90°



Grazing Distributions Color Changing



10-Foot Wall

LFM-120_277-48-10W-MRGBW40K-10x60-HFR
Spacing: 2" | Setback: 0.67'



15-Foot Wall

LFM-120_277-48-10W-MRGBW40K-10x60-HFR
Spacing: 2" | Setback: 0.75'



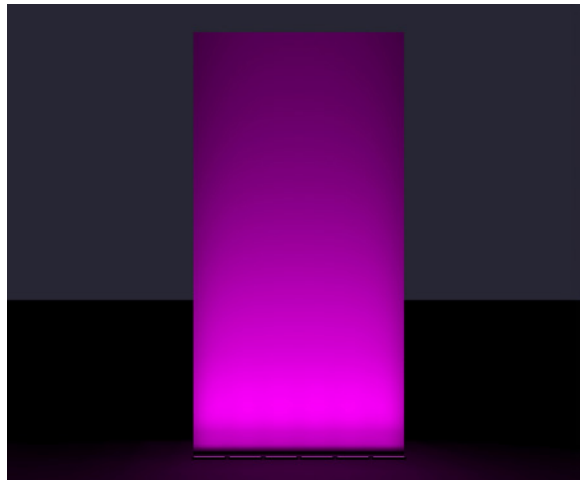
20-Foot Wall

LFM-120_277-48-10W-MRGBW40K-10x30-HFR
Spacing: 2" | Setback: 1'



30-Foot Wall

LFM-120_277-48-22W-MRGBW40K-10x30-HFR
Spacing: 2" | Setback: 1.25'



50-Foot Wall

LFM-120_277-48-22W-MRGBW40K-10x10-HFR
Spacing: 2" | Setback: 1.75'

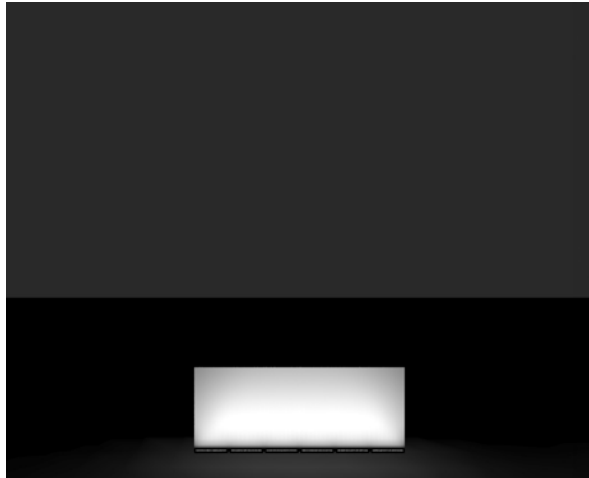


60-Foot Wall

LFM-120_277-48-22W-MRGBW40K-10x10-HFR
Spacing: 3/8" | Setback: 2.25'

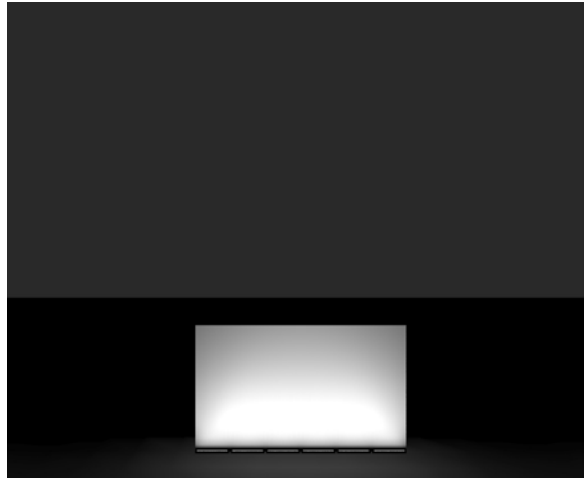
* All spacing is measured between ends of fixtures.

Grazing Distributions Static White



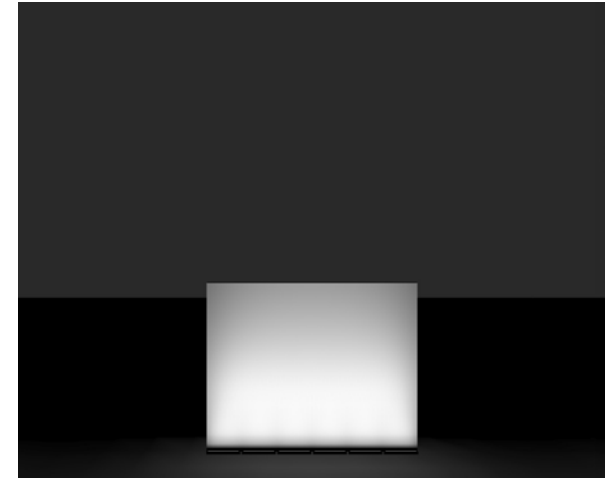
10-Foot Wall

LFM-120_277-48-10W-40K-10x60-HFR
Spacing: 2" | Setback: 0.67'



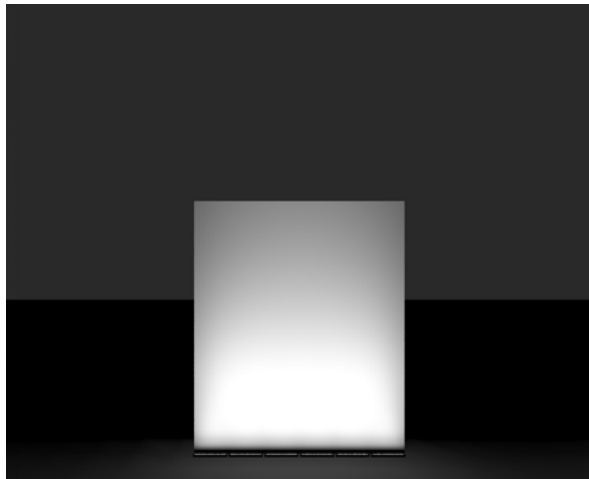
15-Foot Wall

LFM-120_277-48-10W-40K-10x60-HFR
Spacing: 2" | Setback: 0.75'



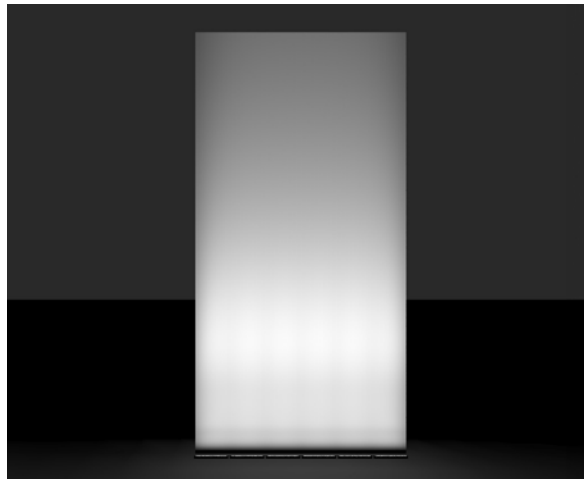
20-Foot Wall

LFM-120_277-48-10W-40K-10x30-HFR
Spacing: 2" | Setback: 1'



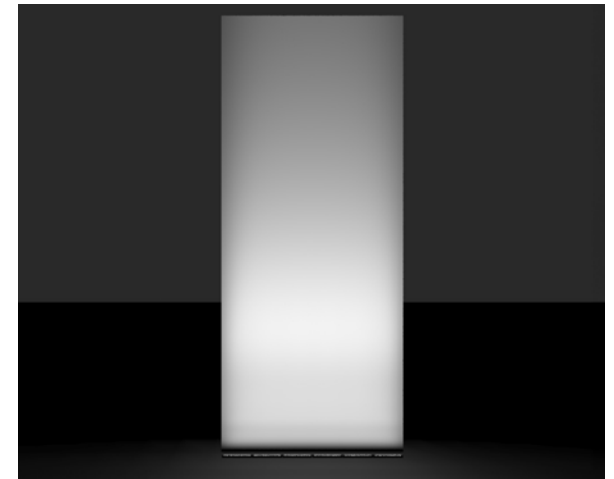
30-Foot Wall

LFM-120_277-48-22W-40K-10x30-HFR
Spacing: 2" | Setback: 1.25'



50-Foot Wall

LFM-120_277-48-22W-40K-10x10-HFR
Spacing: 2" | Setback: 1.75'



60-Foot Wall

LFM-120_277-48-22W-40K-10x10-HFR
Spacing: 3/8" | Setback: 2.25'

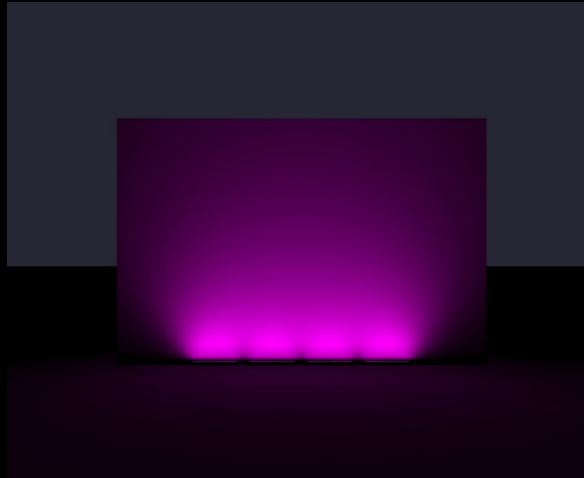
* All spacing is measured between ends of fixtures.

Graze Spacing

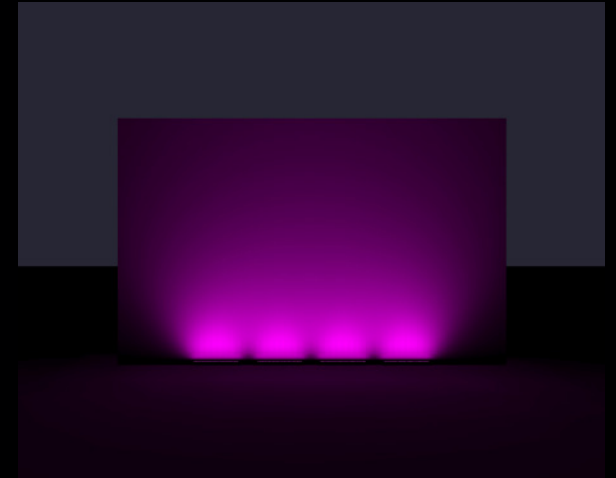
Walls: 20' | Setback: 0.5 FT (6") | Fixtures: LFM-120_277-48-22W-MRGBW40K-10x60-HFR



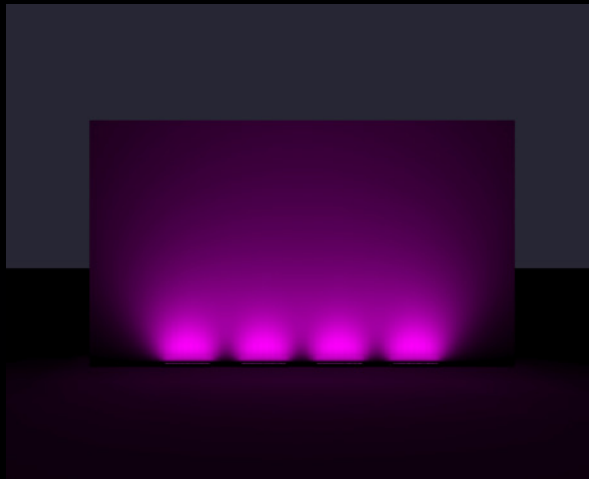
Minimum spacing between fixtures is 3/8".



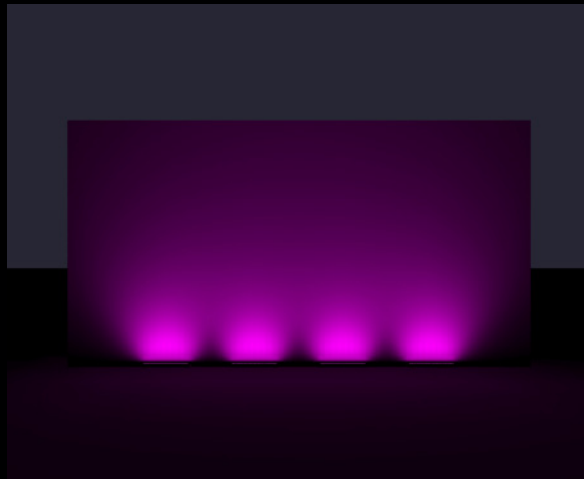
Spacing between fixtures at 0.5'.



Spacing between fixtures at 1'.



Spacing between fixtures at 2'.



Spacing between fixtures at 3'.



Spacing between fixtures at 4'.

* All spacing is measured between ends of fixtures.



Flooding

Flood lighting has a wide range of applications, requiring a variety of optics and luminous output. LEDs deliver uniform, consistent light that is ideal for flood lighting because of their precise controls and long-term durability.

Pick Your Brush Size

30° x 30°
30° x 60°
60° x 60°
90° x 90°

Flooding Distributions



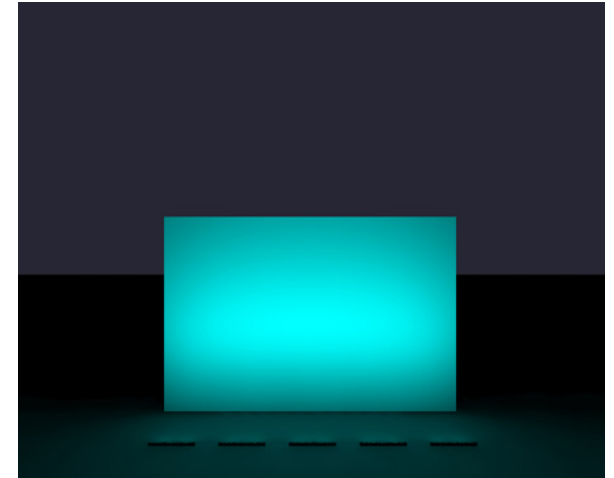
10-Foot Wall

LFM-120_277-48-10W-MRGBW40K-90x90-FR
Spacing: 2' | Setback: 6'



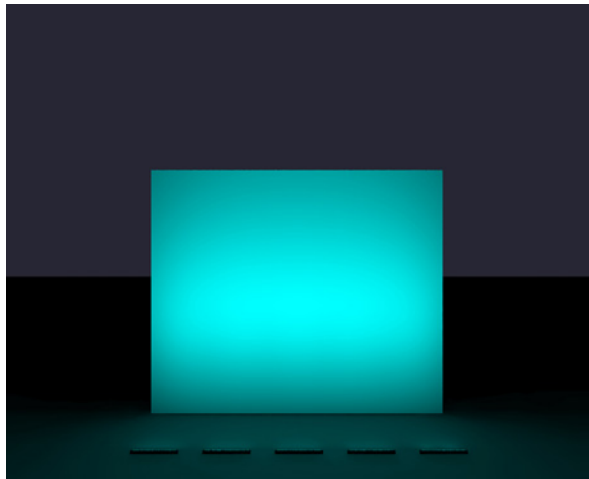
15-Foot Wall

LFM-120_277-48-10W-MRGBW40K-60x60-FR
Spacing: 2' | Setback: 6.5'



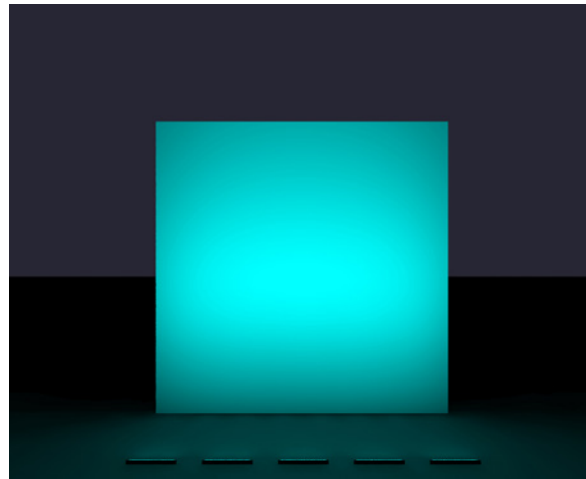
20-Foot Wall

LFM-120_277-48-10W-MRGBW40K-30x60-FR
Spacing: 2' | Setback: 7.5'



25-Foot Wall

LFM-120_277-48-10W-MRGBW40K-30x30-FR
Spacing: 2' | Setback: 8.5'



30-Foot Wall

LFM-120_277-48-22W-MRGBW40K-30x30-FR
Spacing: 2' | Setback: 10'



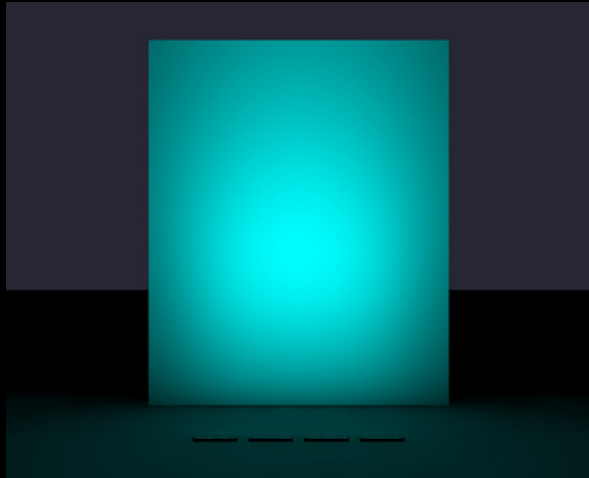
40-Foot Wall

LFM-120_277-48-22W-MRGBW40K-30x30-FR
Spacing: 1' | Setback: 11.5'

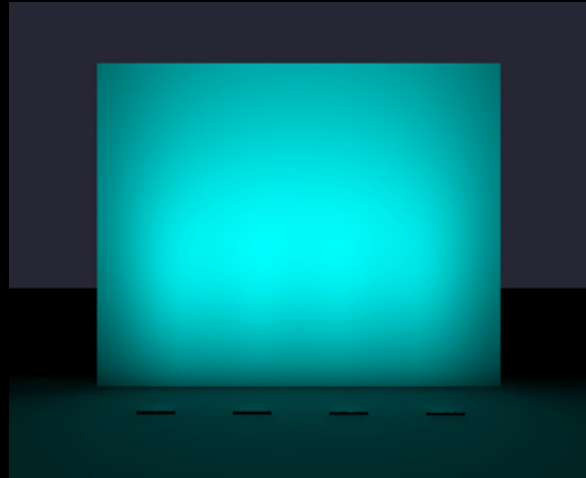
* All spacing is measured between ends of fixtures.

Flood Spacing

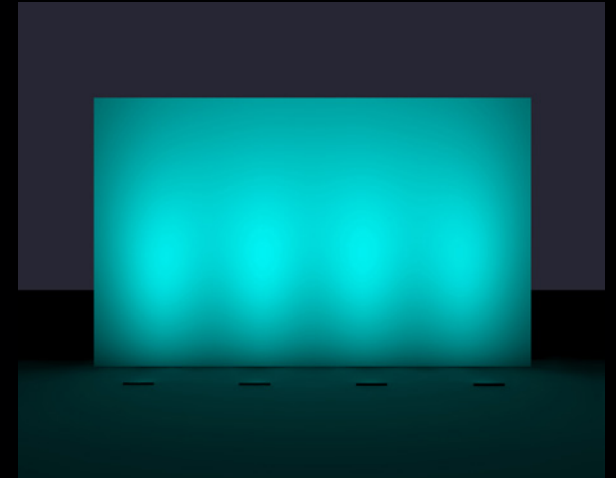
Walls: 40' | Setback: 11.5' | Fixtures: LFM-120_277-48-22W-MRGBW40K-30x30-FR



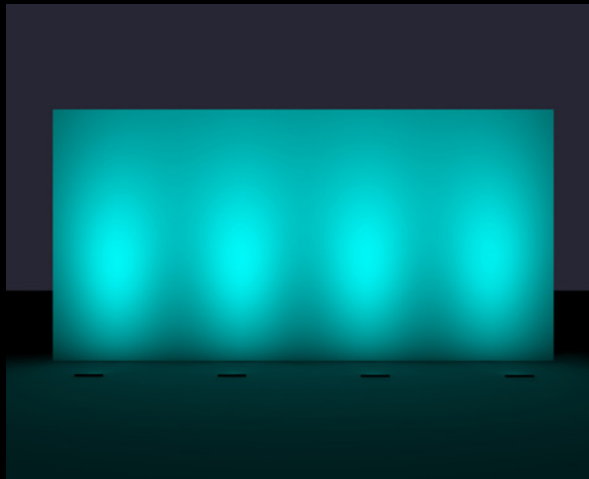
Spacing between fixtures at 1'.



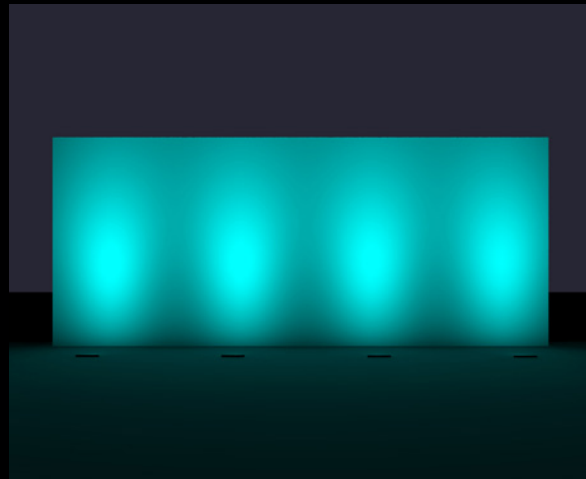
Spacing between fixtures at 6'.



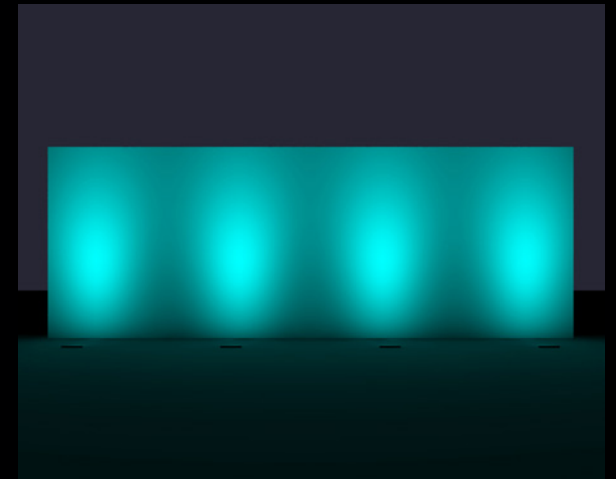
Spacing between fixtures at 11'.



Spacing between fixtures at 16'.



Spacing between fixtures at 21'.



Spacing between fixtures at 26'.

* All spacing is measured between ends of fixtures.



Wallwashing

Wallwashing uses vertical, indirect lighting, which has been placed at an optimal distance and angle from a wall, to create a smooth "wash" effect. Wallwashing is often used to hide rough imperfections, eliminate shadows, and uniformly light up a wall. The Lumenfacade Max has the optics needed to create a clean, impressive wallwash on any number of surfaces and surface heights.

Washing Isn't a Chore

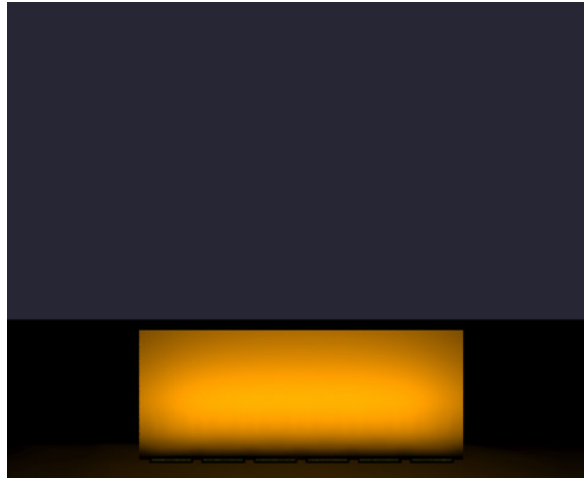
Wallwash
Narrow Asymmetric
Ceiling Asymmetric

Wallwashing Examples



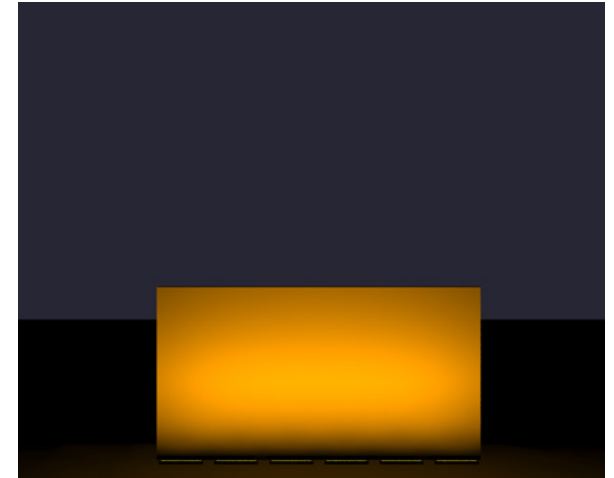
8-Foot Wall

LFM-120_277-48-10W-MRGBW40K-VWW-HFR
Spacing: 0.5' | Setback: 1'



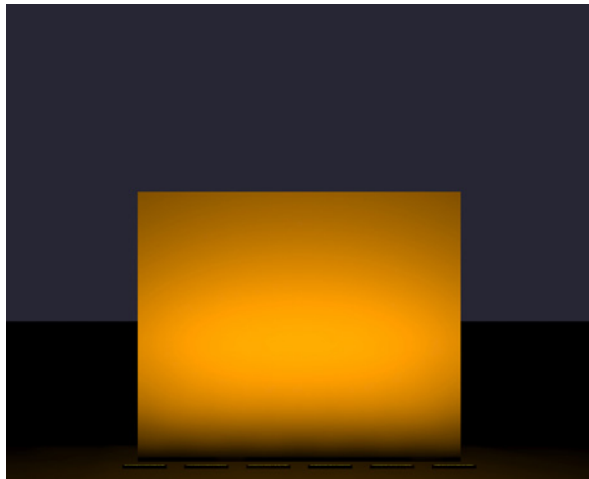
12-Foot Wall

LFM-120_277-48-10W-MRGBW40K-VWW-HFR
Spacing: 0.75' | Setback: 1.5'



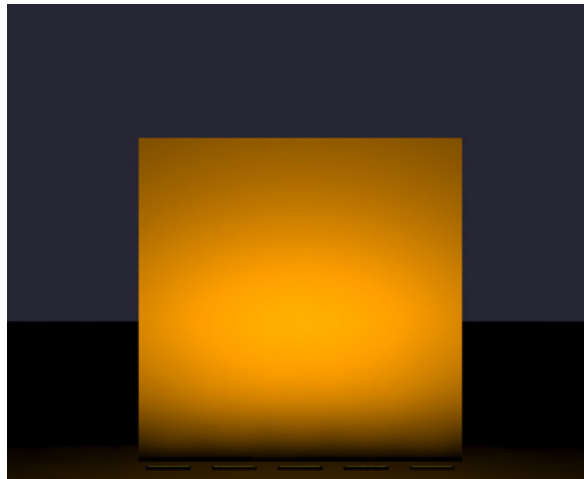
16-Foot Wall

LFM-120_277-48-10W-MRGBW40K-VWW-HFR
Spacing: 1' | Setback: 2'



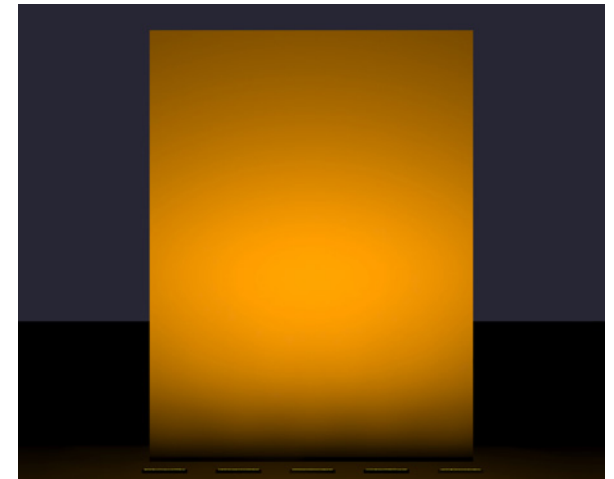
25-Foot Wall

LFM-120_277-48-22W-MRGBW40K-VWW-HFR
Spacing: 1.56' | Setback: 3.12'



30-Foot Wall

LFM-120_277-48-22W-MRGBW40K-VWW-HFR
Spacing: 1.88' | Setback: 3.75'

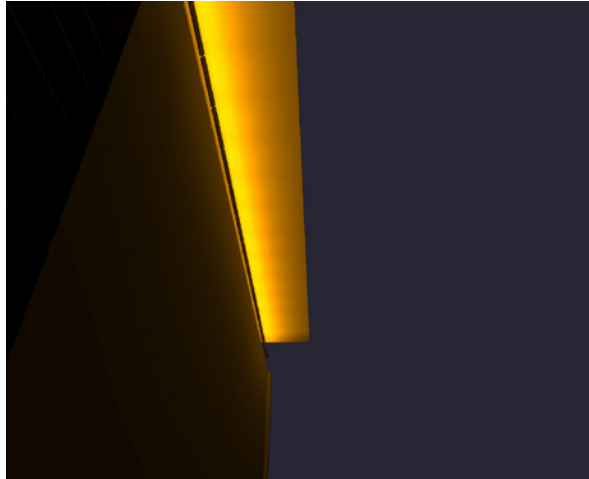


40-Foot Wall

LFM-120_277-48-22W-MRGBW40K-VWW-HFR
Spacing: 2.5' | Setback: 5'

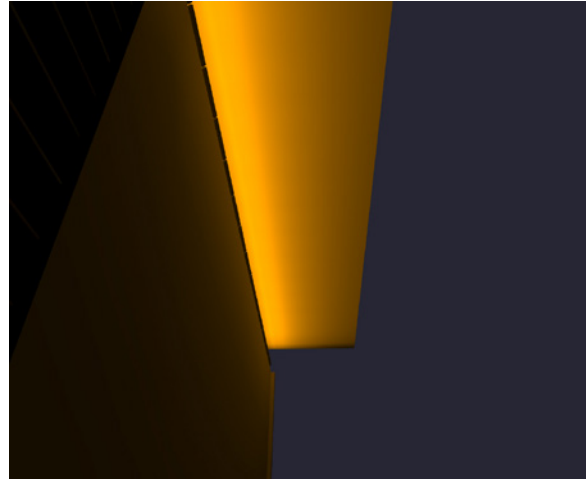
* All spacing is measured between ends of fixtures.

Asymmetric Examples



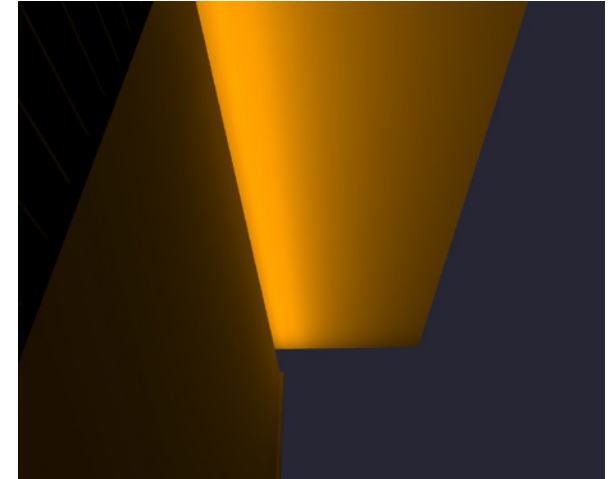
6-Foot Canopy

LFM-120_277-48-10W-MRGBW40K-CAS-CL
No space between fixtures | Setback: 1.2'



12-Foot Canopy

LFM-120_277-48-10W-MRGBW40K-CAS-CL
No space between fixtures | Setback: 2.4'



20-Foot Canopy

LFM-120_277-48-10W-MRGBW40K-CAS-CL
No space between fixtures | Setback: 4'



Ceiling Asymmetric (CAS)

1:5 setback | Canopy depth ratio
No space between fixtures



Narrow Asymmetric (NAS)

1:12 setback ratio, 6" minimum setback
No space between fixtures

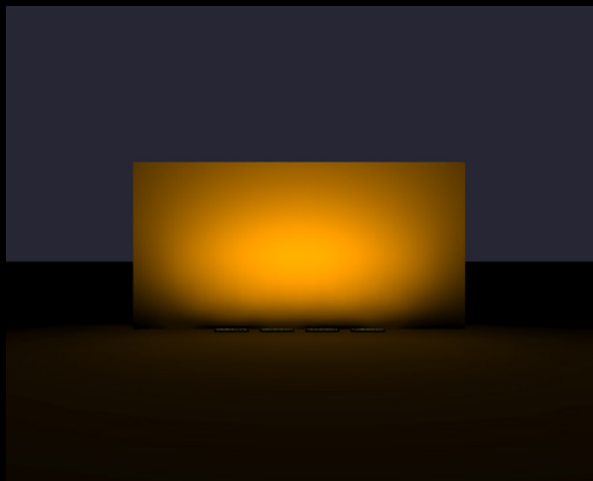


Asymmetric Wallwash (WW)

1:8 setback ratio, 6" minimum setback
Space between fixtures = 1/2 setback

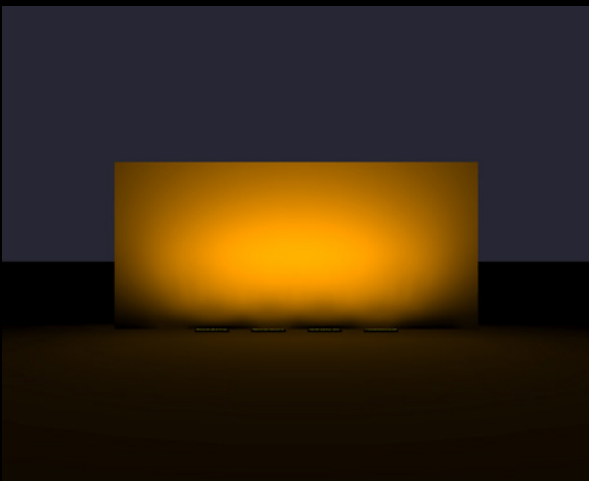
Wallwash Spacing

Walls: 20' | Setback: 2.5' | Fixtures: LFM-120-277-48-10W-MRGBW40K-VWW-HFR



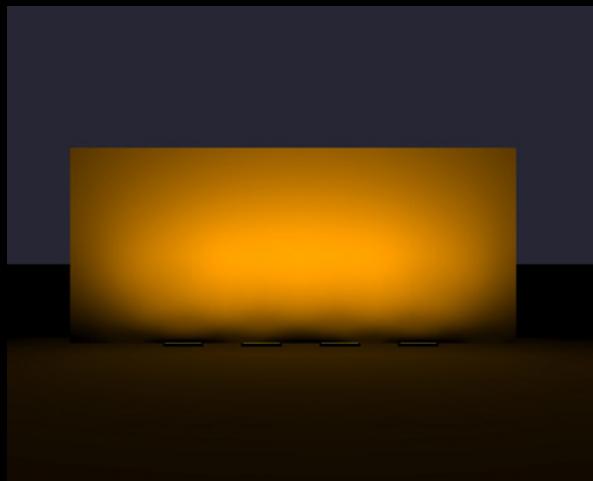
Recommended Ratio

Recommendation ratio is: Setback = $1/8$ wall height,
Spacing = setback / 2 | Spacing: 1'-3"



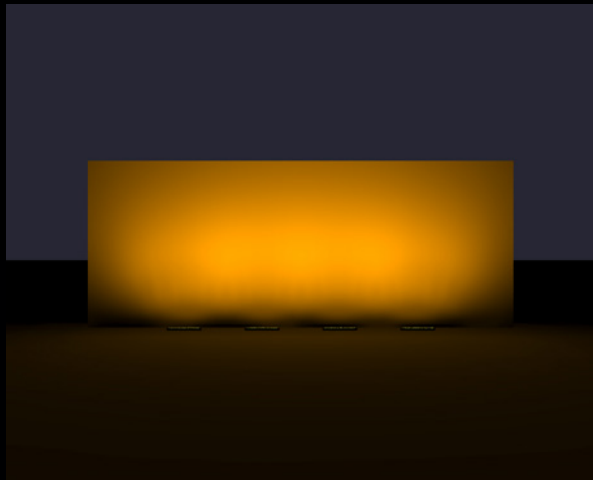
2x Recommended Ratio

Spacing: 2'-6"



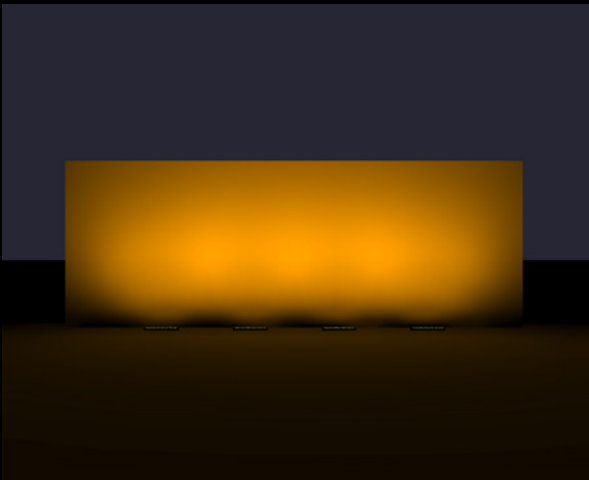
3x Recommended Ratio

Spacing: 3'-9"



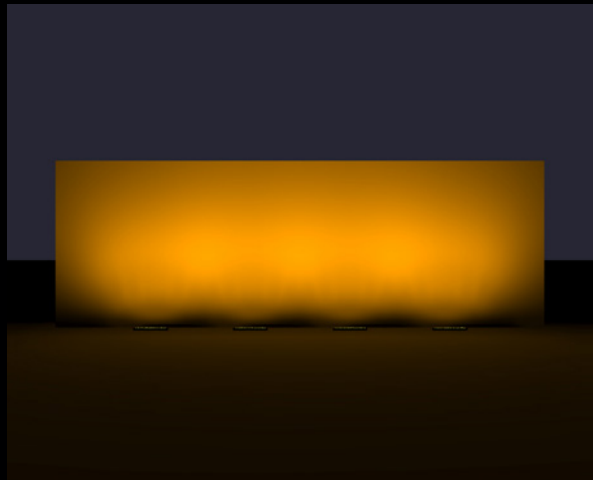
4x Recommended Ratio

Spacing: 5'



5x Recommended Ratio

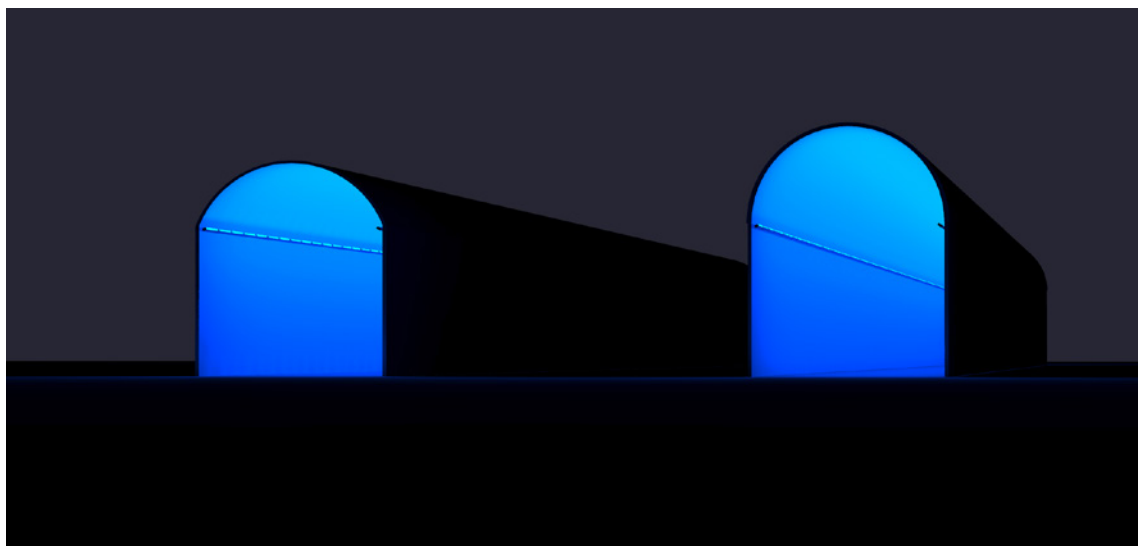
Spacing: 6'-3"



6x Recommended Ratio

Spacing: 7'-6"

* All spacing is measured between ends of fixtures.

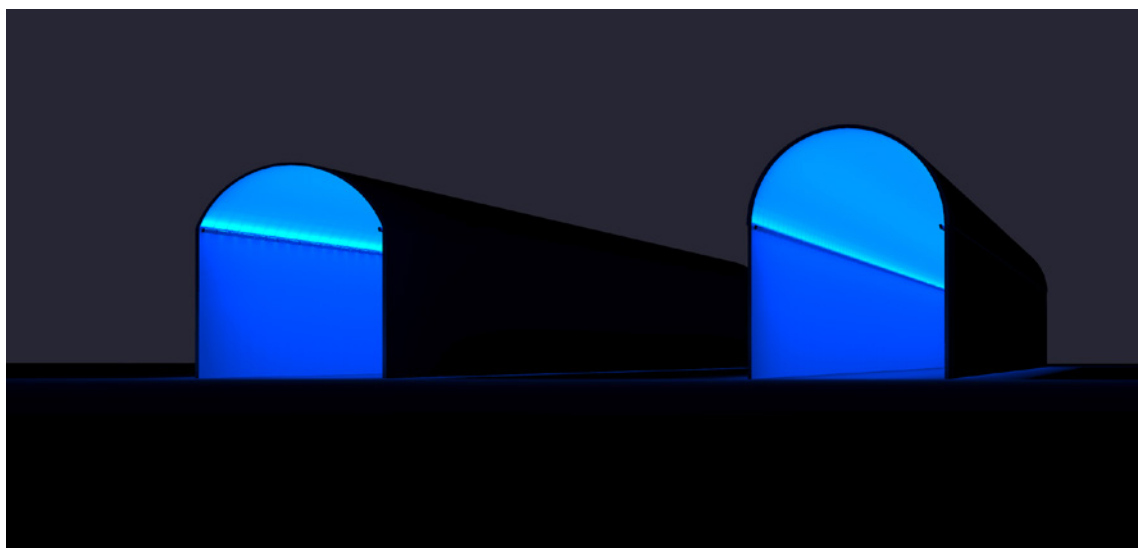
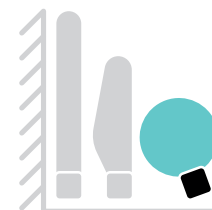


Arched Ceiling 15'W x 5'H
LFM-120_277-48-10W-MRGBW40K-60x60-FR

Minimum Spacing (3/8")

Arched Ceiling 15'W x 7.5'H
LFM-120_277-48-10W-MRGBW40K-60x60-FR

Minimum Spacing (3/8")



Arched Ceiling 15'W x 5'H
LFM-120_277-48-10W-MRGBW40K-CAS-CL

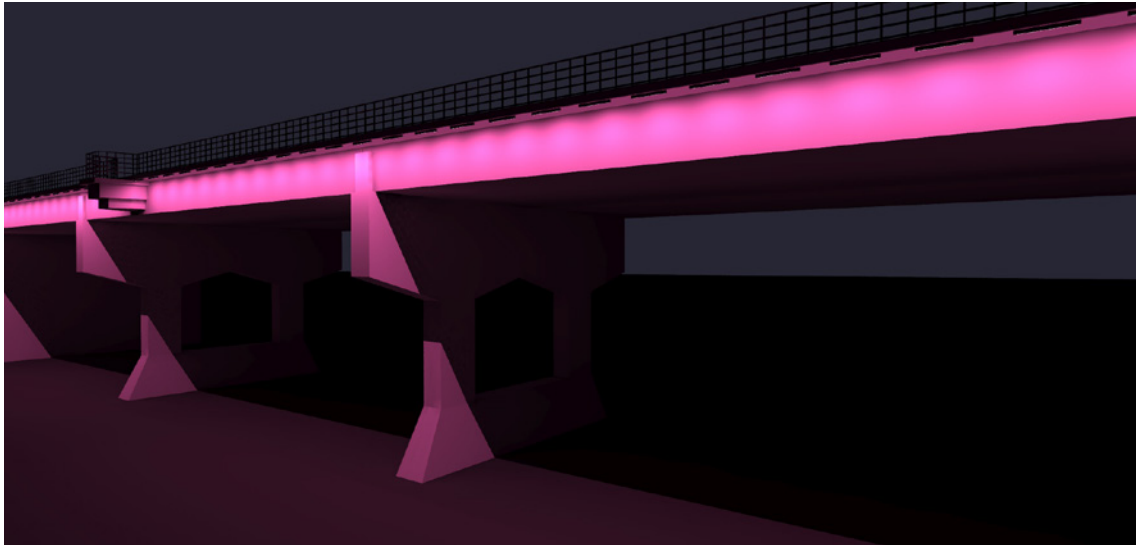
Minimum Spacing (3/8")

Arched Ceiling 15'W x 7.5'H
LFM-120_277-48-10W-MRGBW40K-CAS-CL

Minimum Spacing (3/8")

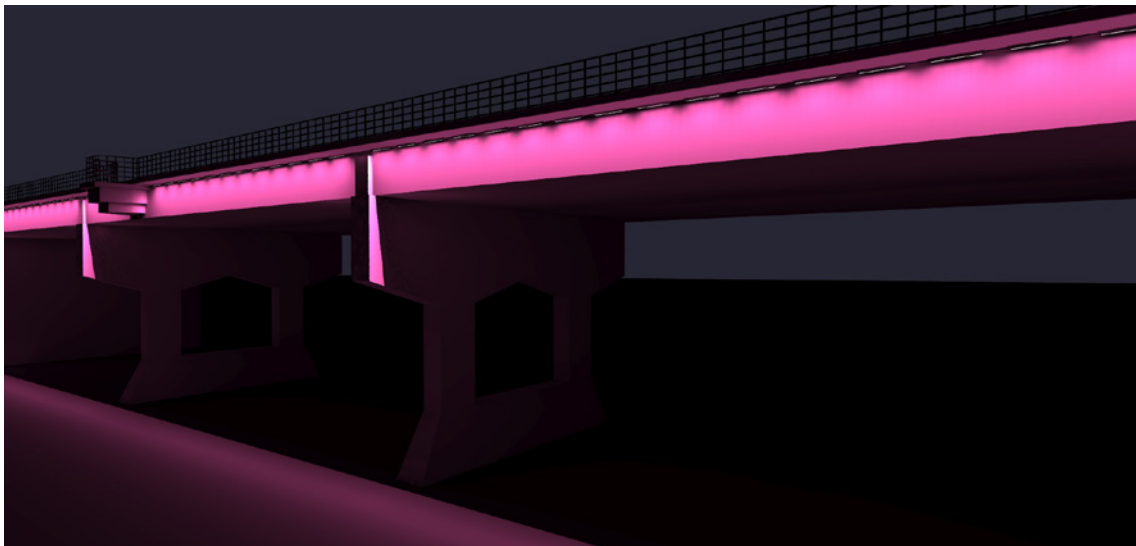


* All spacing is measured between ends of fixtures.



Bridge Girder (5.8' high surface) LFM-120_277-48-10W-MRGBW40K-W-FR

Spacing: 2.5' | Setback: 3.5'

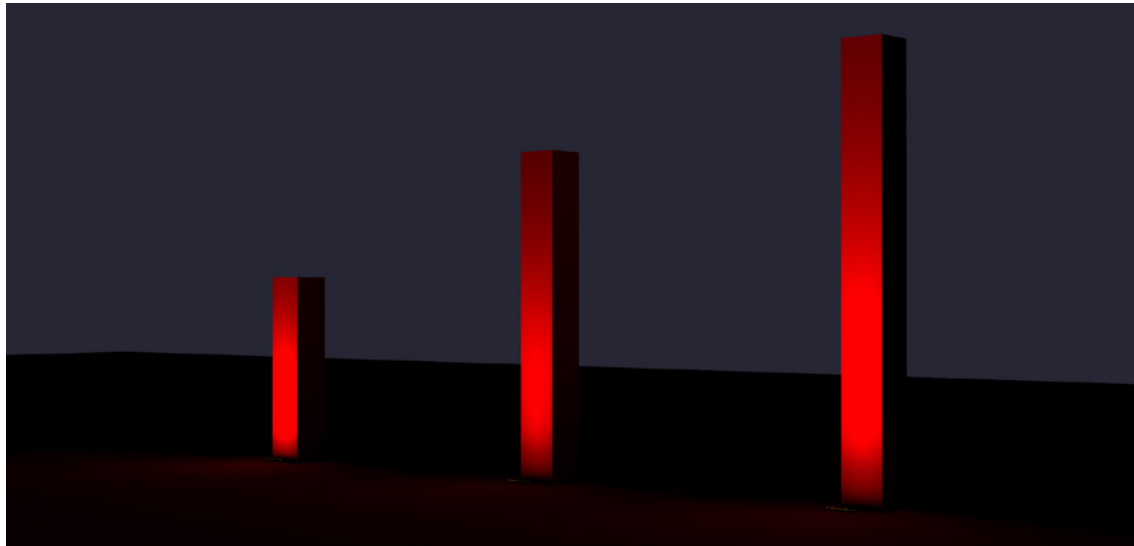


Bridge Girder (5.8' high surface) : LFM-120_277-48-10W-MRGBW40K-10x90-HFR

Spacing: 1.5' | Setback: 0.75'



* All spacing is measured between ends of fixtures.



25'H Column:
LFM-120_277-48-10W-
MRGBW40K-NAS-HFR

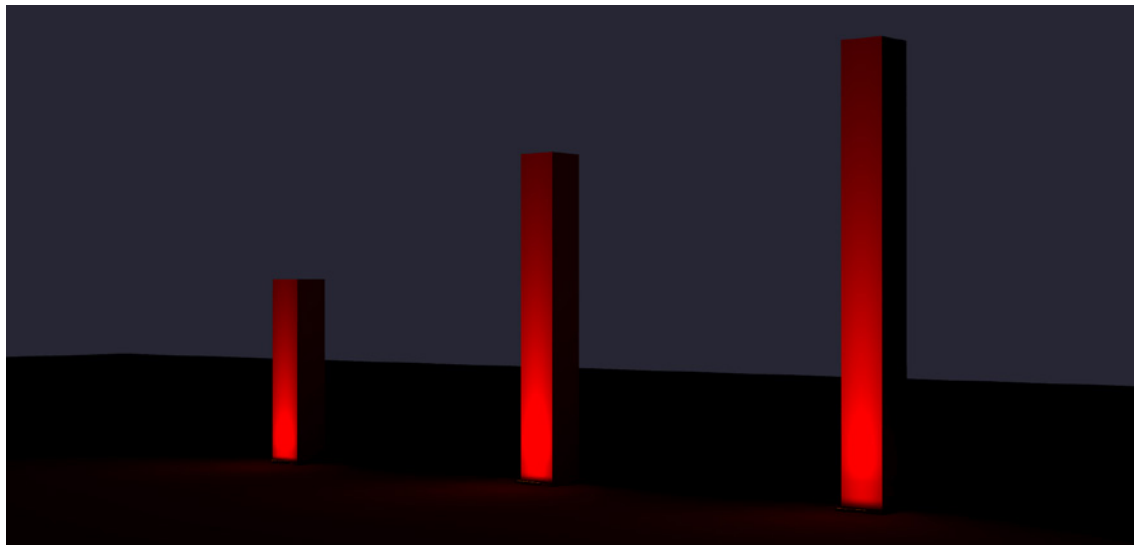
Setback: 2.5'

40'H Column:
LFM-120_277-48-10W-
MRGBW40K-NAS-HFR

Setback: 4'

50'H Column:
LFM-120_277-48-22W-
MRGBW40K-NAS-HFR

Setback: 5'



25'H Column:
LFM-120_277-48-10W-
MRGBW40K-10x10-HFR

Setback: 1'

40'H Column:
LFM-120_277-48-22W-
MRGBW40K-10x10-HFR

Setback: 1.5'

50'H Column:
LFM-120_277-48-22W-
MRGBW40K-10x10-HFR

Setback: 2'



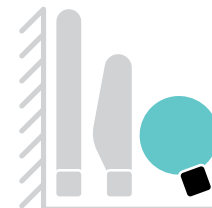


18'W x 6'H :
LFM-120_277-48-10W-MRGBW40K-30x90-FR

Spacing: 1' | Setback: 2.17'

20'W x 3.5'H :
LFM-120_277-48-10W-MRGBW40K-60x60-FR

Spacing: 1' | Setback: 2.17'



18'W x 6'H :
LFM-120_277-48-10W-MRGBW40K-WW-HFR

Spacing: 0.6' | Setback: 1'

* All spacing is measured between ends of fixtures.

20'W x 3.5'H :
LFM-120_277-48-10W-MRGBW40K-WW-HFR

Spacing: 1' | Setback: 1'





Corporate Headquarters

1220 Marie-Victorin Blvd.
Longueuil, QC
J4G 2H9 Canada

T +1.877.937.3003
T +1.514.937.3003
F +1.514.937.6289

info@lumenpulse.com
www.lumenpulse.com

© Lumenpulse™

2025 / 09
#158250_REV4

